



**Department
of Health**

NY Coverdell Stroke Program

Pre-Notification Journey

Agenda

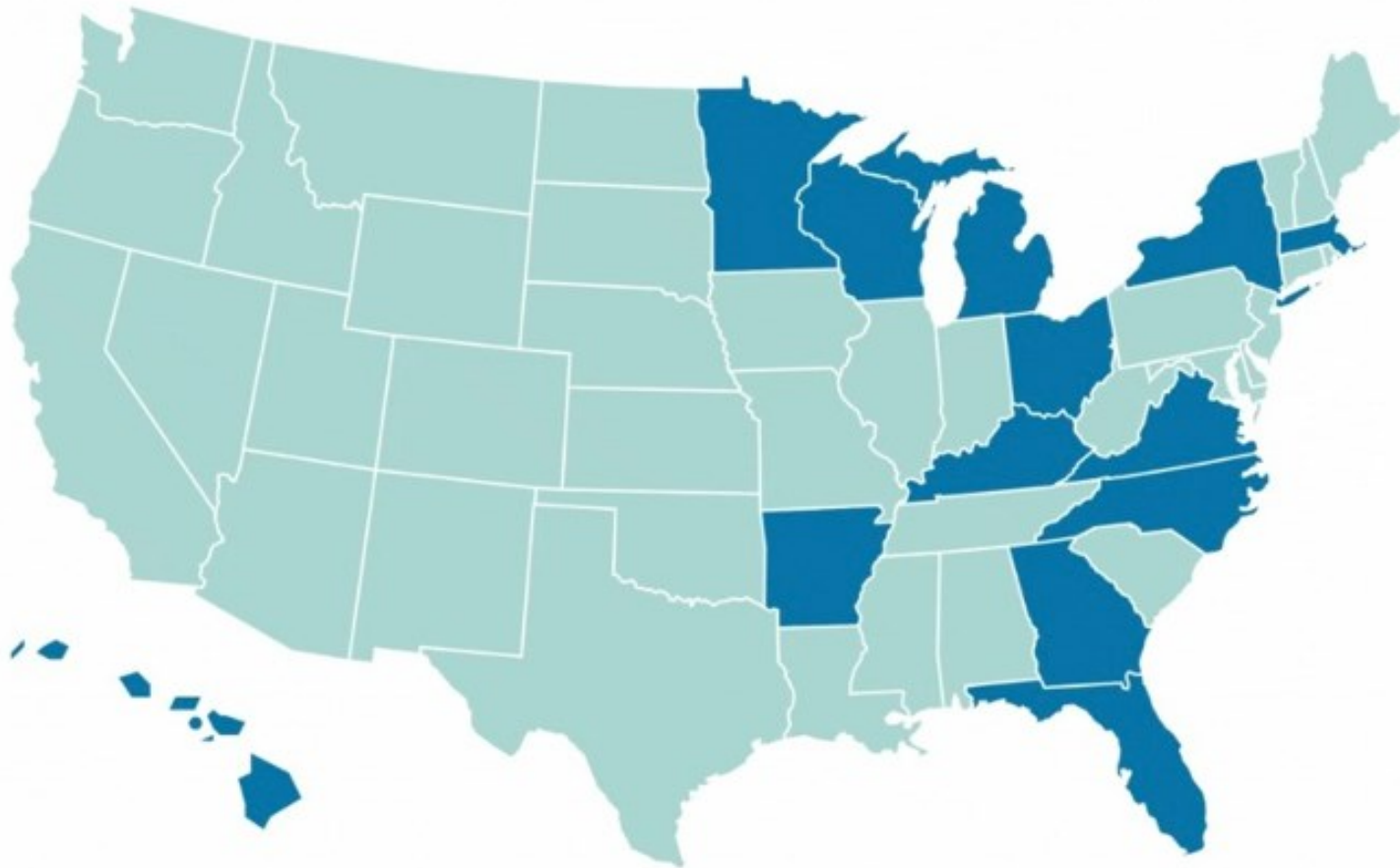
- What is Coverdell?
- NYS Pre-notification Journey:
 - Pre-notification data review
 - Implemented strategies
- Next Steps



What is the



^{PAUL}
Coverdell
NATIONAL ACUTE STROKE PROGRAM



- The Paul Coverdell National Acute Stroke Program (Coverdell Program) is CDC program that funds states to collect, measure and track data to improve the quality of care for stroke.
- New 3-year grant focusing on prevention/secondary prevention in high-risk populations, EMS-Hospital handoffs, community health worker/nurse navigator, community education.

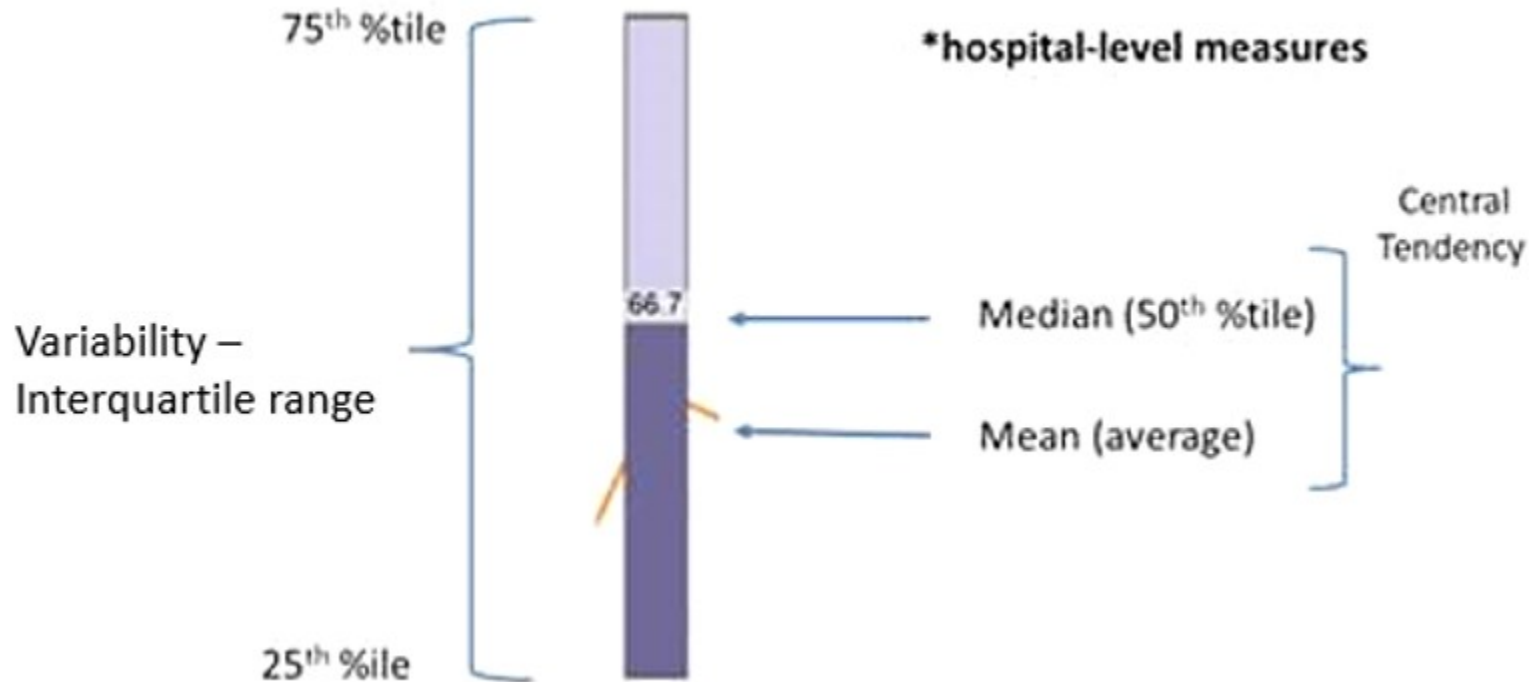
Pre-Notification Data Review

Data Source and Methods

- Data from GWTG-Stroke accessible through the NYSDOH SuperUser Account (# of hospitals represented is reflected in visualizations)
- Time period covered Quarter 1 of 2015 through Quarter 4 2020 (varies for newer measures)
- Standard measure definitions and performance standards based on NY Stroke Designation criteria within GWTG were used
- Data are summarized for stroke centers in New York City (NYC) and Long Island (LI) and stroke centers outside NYC and LI separately

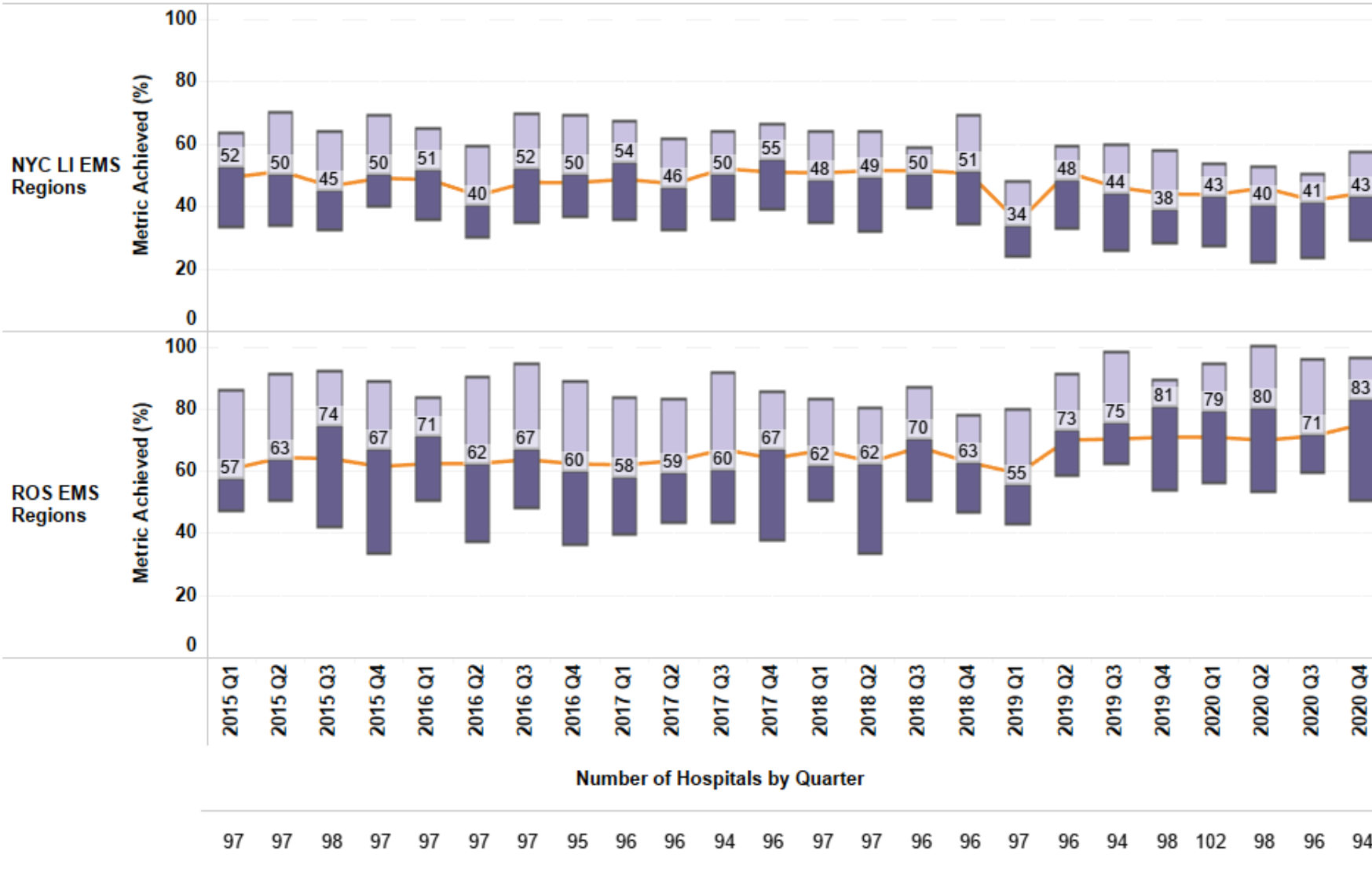
Metric Visualizations

Explanation of Measures* Graphed



- Visualizations display the interquartile range (IQR): This displays the facilities that rank between the 25-75th percentile in achieving the metric for each time period.
- The shading is used to identify the interquartile range with dark purple indicating the first quartile to the median, and light purple indicating the median to the third quartile.

NYS PSC 13: Pre-Notification



Pre-Hospital

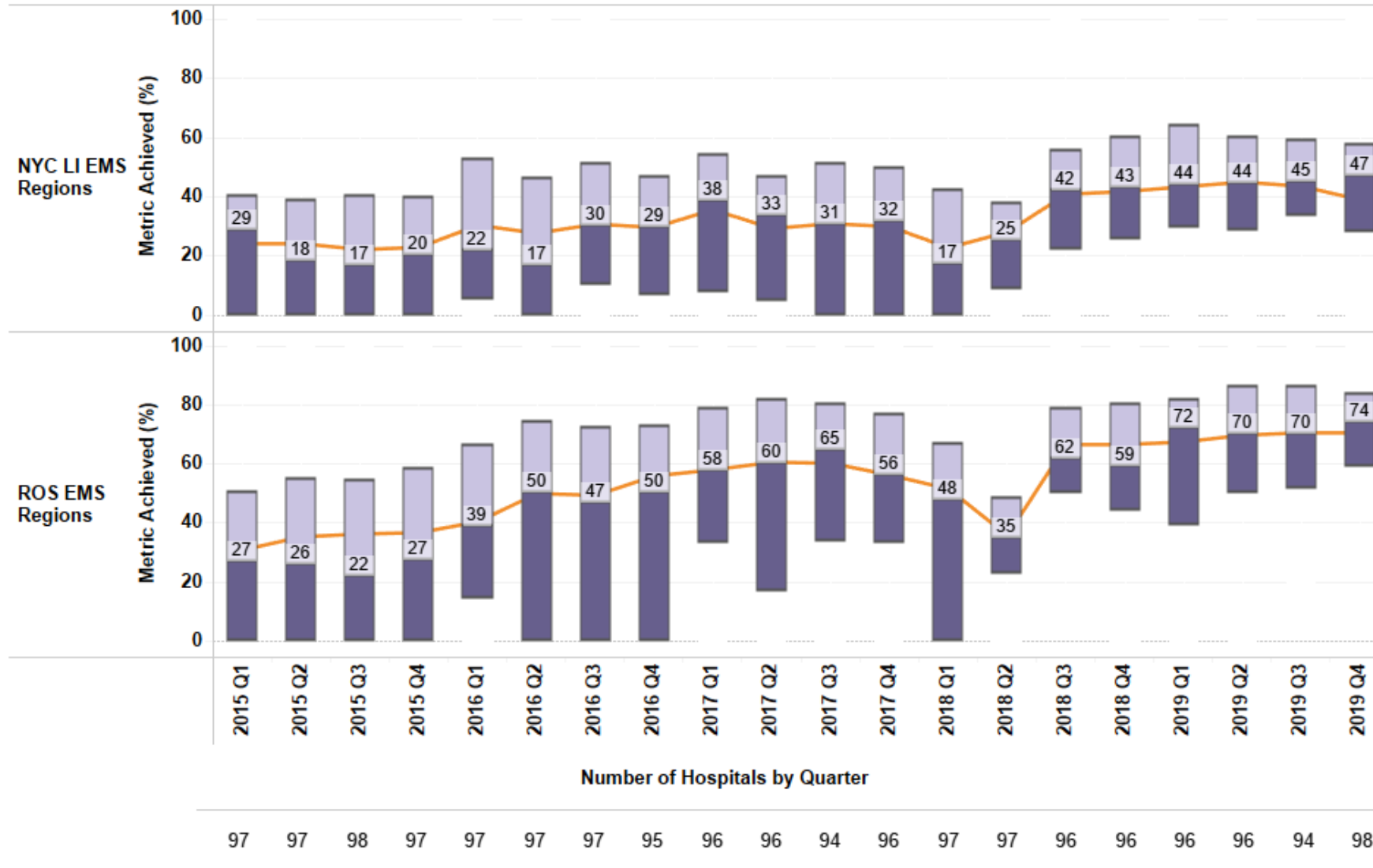
NYS PSC 13: Pre-Notification

NYS PSC 14: EMS Pre-Hospital Stroke Scale

NYS PSC 15: Pre-Notification Content: Last Known Well Communicated

- Regional variation in metric
- Larger between-facility variation for ROS
- Percent of cases of advanced notification by EMS for patients transported by EMS from scene

NYS PSC 14: EMS Pre-Hospital Stroke Scale

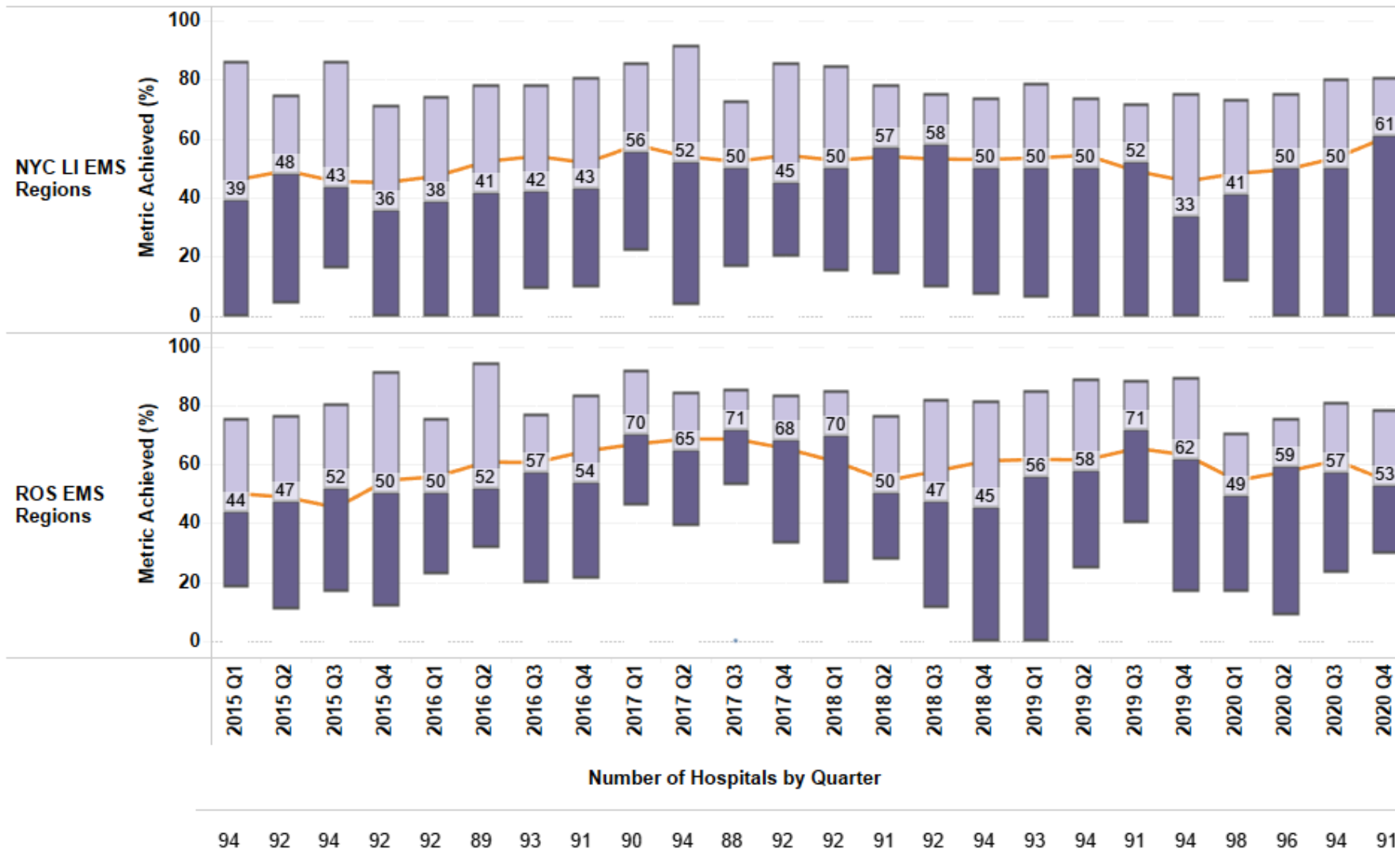


Pre-Hospital

NYS PSC 13: Pre-Notification
NYS PSC 14: EMS Pre-Hospital Stroke Scale
 NYS PSC 15: Pre-Notification
 Content: Last Known Well Communicated

- Between-facility variation decreases in Q3 2018
- Percent of patients arriving via EMS who had pre-hospital stroke scale performed

NYS PSC 15: Pre-Notification Content: Last Known Well Communicated



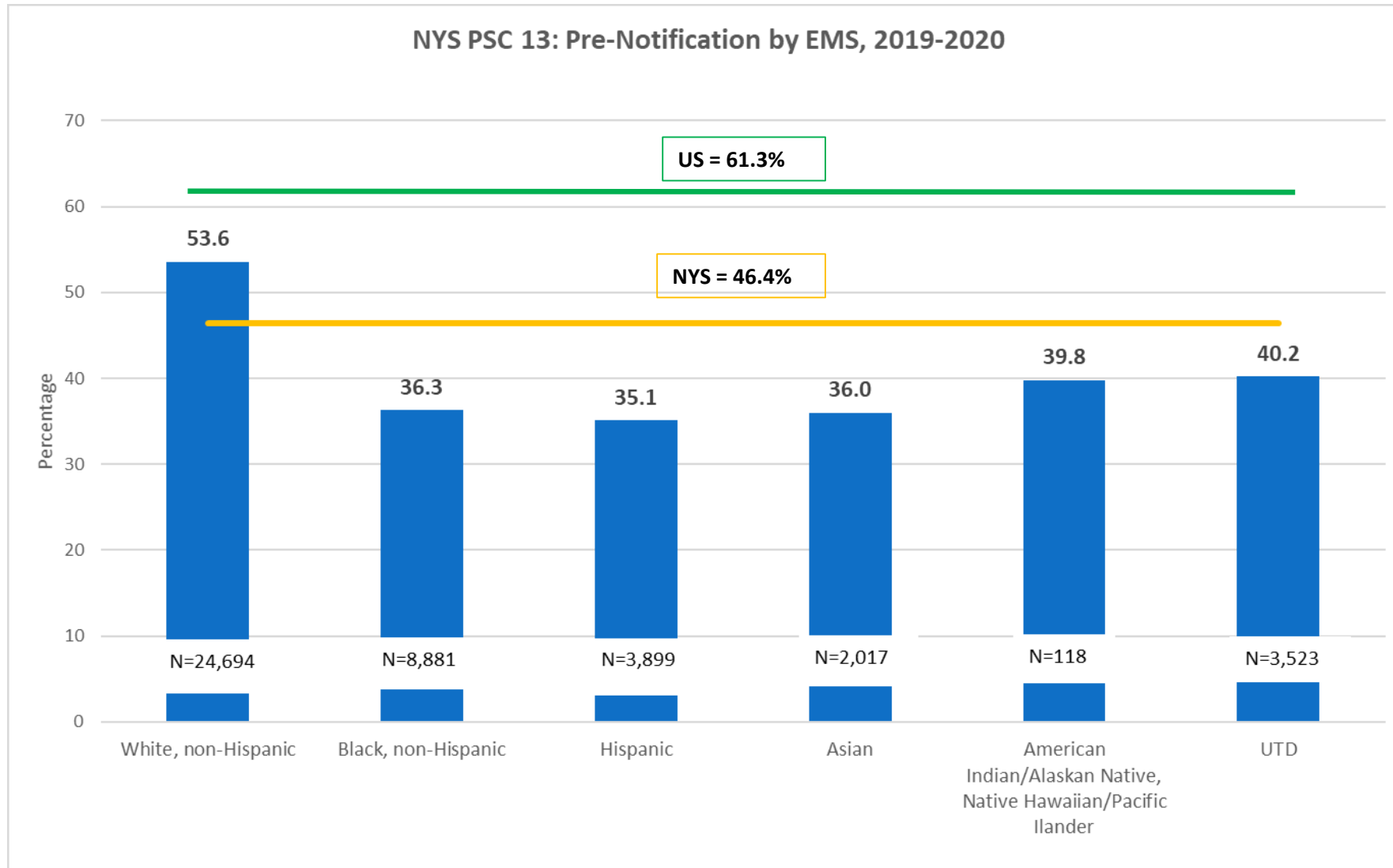
Pre-Hospital

NYS PSC 13: Pre-Notification
 NYS PSC 14: EMS Pre-Hospital Stroke Scale
NYS PSC 15: Pre-Notification Content: Last Known Well Communicated

- Large between-facility variation
- LKW information was communicated in the EMS pre-notification

Disparities in Pre-Notification data

Cases with advanced notification by EMS for patients transported by EMS or MSU from scene

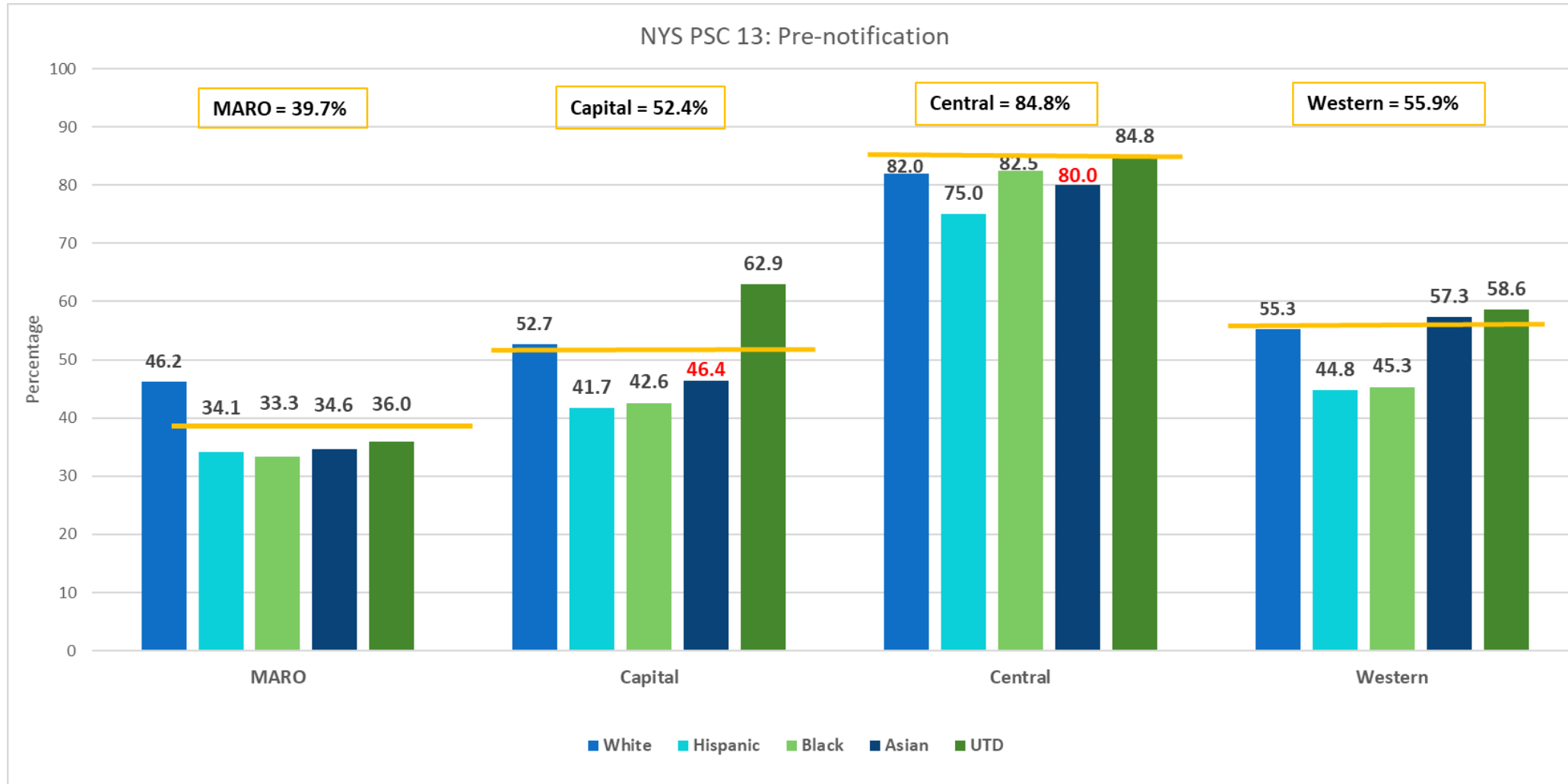


Documentation of pre-notification by EMS was consistently lower for non-White stroke patients.

Note:

- UTD= Unable to determine, GWTG category

Pre-notification by Region and Race/Ethnicity



Although there are regional differences in prenotification by EMS, disparities in EMS prenotification associated with race/ethnicity are observed within each region.

Notes:

- Percentages with red text are based on sample sizes of less than 30 patients.
- UTD = unable to determine, GWTG category



NY Coverdell Program

Pre-N Improvement Activities

State Activities

- ✓ State Protocol update
- ✓ Stroke data elements included in EMS electronic Patient Care Record (ePCR)
- ✓ ePCR validation scoring
- ✓ QI Advisor – Best Practice (BP) guide
- ✓ Learning sessions (data quality, BP, implementation)

Regional / Local

- ✓ Document pre-N call inside the hospital and standardize where it's saved in the EMR
- ✓ Provide feedback to EMS
- ✓ Partner with regional and local EMS to review data routinely and identify process improvements

Next Steps

- State and regional stroke protocol review
- EMS/GWTG data review/comparison
- Identify educational opportunities
- Work in priority regions on pre-notification, disparities and handoff processes

Questions?



Krystal.Parrigan-Oades@health.ny.gov

Coverdell@health.ny.gov