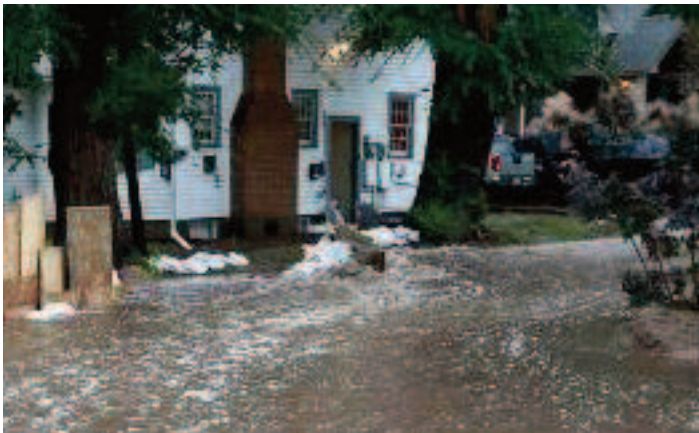


UPSTATE

MEDICAL UNIVERSITY

Department of Public Health &
Preventive Medicine

Medical Sheltering During a Flood Evacuation



Check out our Master of Public Health (MPH) Degree Program and our Certificate of Advanced Study in Public Health at:

www.upstate.edu/cnymph

Applications for 2014 accepted through April 15, 2014. Apply early, enrollment is limited.

GRAND ROUNDS

Thurs. March 20, 2014

12:15-1:15 p.m.

Room 2231

Weiskotten Hall

Upstate Medical University campus

766 Irving Ave.

Syracuse, NY

Presented by:

Christopher W. Ryan, MD, MS

- Medical Director
Broome County Health Department
- Clinical Associate Professor, Family Medicine
SUNY Upstate Medical University

WHO SHOULD ATTEND

- Public health professionals
- Physicians
- Nurses
- Physician assistants
- Nurse practitioners
- Students
- Anyone interested in public health, community health, and prevention.

OBJECTIVES

After the presentation, participants will:

- Know the magnitude and nature of medical issues to expect among people displaced by a flood or other disaster in your community.
- Be able to list several new people, organizations, or institutions in your community with whom you should strike up a new relationship, in order to improve your response to disaster and mass evacuation.
- Understand that your response to a disaster and mass evacuation will rely solely on local resources for the first 3-5 days, and that you need to plan accordingly.

The presentation is free and open to the public. For those who can't attend in person, register for our webinar at:

<https://www1.gotomeeting.com/register/560303585>

Disclosure Information: The speaker and planners for this activity have disclosed they have no financial relationships with commercial entities and will not discuss the off label use of pharmaceuticals.