

THE ECONOMIC AND COMMUNITY IMPACT

OF THE STATE UNIVERSITY OF NEW YORK
UPSTATE MEDICAL UNIVERSITY

STATE UNIVERSITY OF NEW YORK
UPSTATE
MEDICAL UNIVERSITY

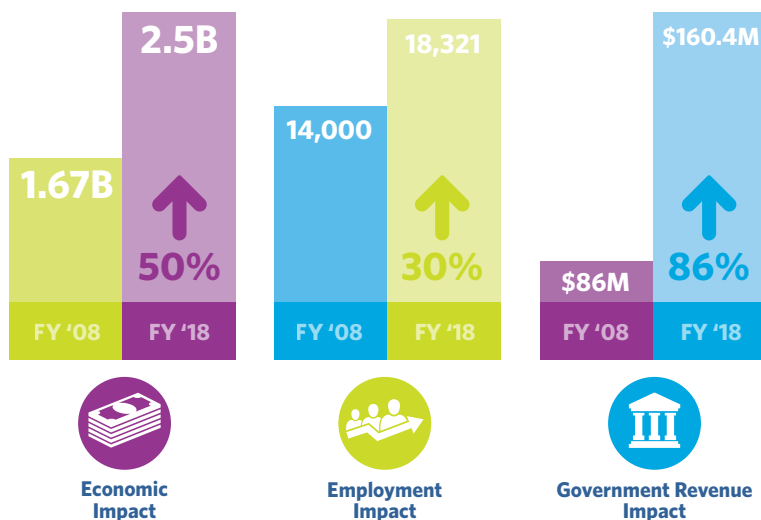
www.upstate.edu

SUNY Upstate Medical University in Syracuse, NY, is the only academic medical center in Central New York and is also the region's largest employer. As part of the State University of New York, Upstate's mission to improve the health of the community it serves is anchored by its four colleges (Medicine, Nursing, Health Professions, and Graduate Studies), a biomedical research enterprise, its three hospital sites, an extensive clinical network covering patients in 17 counties, and other supporting entities.

SUNY Upstate has a tremendous impact on the region. Economic impact is generated when Upstate invests in capital improvements and pays its staff. In turn, employees spend their income on housing and services in their communities. Further economic impact is generated by students, medical residents, patients, and other visitors to SUNY Upstate.

In fiscal year 2018, SUNY Upstate contributed more than \$2.5 billion in economic impact to the state of New York.

Increase In Impacts from 2007-2008 to 2017-2018



A Decade of Growth

In fiscal year 2018, the overall economic impact of SUNY Upstate on the state amounted to **\$2.5 billion**—\$1.2 billion directly from its operating budget, and an additional \$1.3 billion in indirect and induced impact. This is a 50% increase in the past 10 years. The combined direct and indirect employment impact of SUNY Upstate totaled **18,321 jobs**—a 30% rise in impact over the past decade. State and local government revenues attributable to SUNY Upstate were more than **\$160 million**, a rise in contribution of 86%, dispelling the notion that non-profits do not contribute to tax revenue.

#1

**EMPLOYER
IN CENTRAL NY**



TOTAL PAYROLL

**\$625
MILLION**

Upstate employees circulate their paychecks in businesses across New York State. They also contribute as taxpayers and productive community members in hundreds of hometowns.

Source: Upstate Payroll Office



**COMMITMENT TO A
DIVERSE WORKFORCE**

**10,078
TOTAL JOBS**

9,344 State, Research Foundation, MedBest Employees
734 Temporary and Contract Employees

Upstate Return on NYS Investment

\$1 of state support to SUNY Upstate generates an additional \$58 in the NYS Economy.



\$1
State
Operating
Support



\$58
Upstate
Economic
Impact



Direct economic impact measures the dollars that are generated within New York due to the presence of SUNY Upstate.

What is included in the Economic Impact?

- Operational Spending
- Capital Spending
- Research Spending
- Number of Employees
- Salaries and Benefits
- Visitor Spending
- Student Spending

What benefits are not included in the Economic Impact?

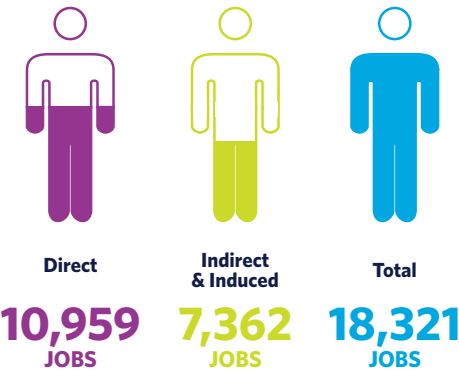
- Research Commercialization
- Attraction Power
- Knowledge and Expertise
- Arts and Culture

Leading Employer

SUNY Upstate is more than just a community asset delivering high-quality care and educating healthcare professionals; it also employs thousands of individuals in high-level jobs across the region. SUNY Upstate directly supports more than **10,959 employees**. In addition, there are another **7,362 employees** supported by the business done with other vendors or as a result of the direct employees' household spending.

Employment Impact of SUNY Upstate on the State of New York

Source: Tripp Umbach using IMPLAN result from data obtained through the SUNY Upstate.



About this Report

Upstate Medical University commissioned this economic and community impact report with Tripp Umbach. To read the full report, please visit www.upstate.edu/impact.

Research Impacts of SUNY Upstate on New York

All research at SUNY Upstate is dedicated to making discoveries to improve human health. Upstate is entering its third year of near double-digit growth in annual research expenditures. Grants are concentrated in five basic science departments; Upstate's clinical departments host more than **450 active clinical trials**. The SUNY research expenditures of **\$35 million** ripple through the state economy and generated an additional **\$20.7 million** in indirect and induced activity.



SUNY Upstate Research Directly and Indirectly Generates

\$55.7 MILLION

Per Year for the State of New York



SUNY Upstate Research Creates and Supports More Than

477 JOBS

Per Year for the State of New York



SUNY Upstate Research Generates

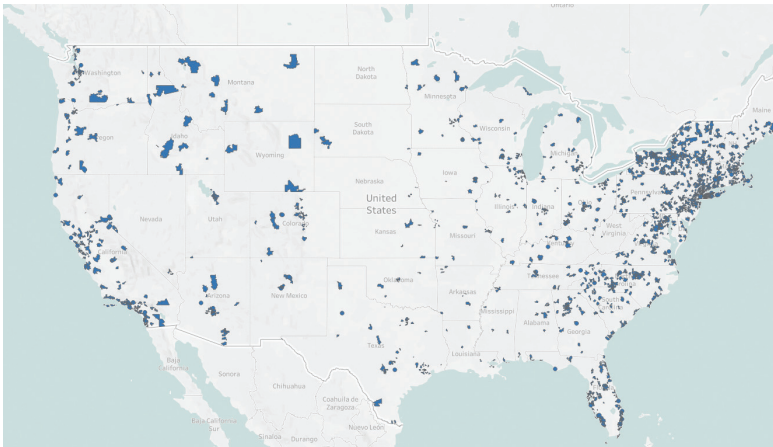
\$3.0 MILLION

Per Year In Tax Revenue for the State of New York

Alumni Impacts of SUNY Upstate

Nearly **7,900 SUNY Upstate alumni physicians** are licensed throughout the United States. Tripp Umbach estimates that these alumni are generating more than **\$24.8 billion** in economic activity and support or employ nearly **132,354 employees** throughout the United States.

Nearly 70 percent of all SUNY Upstate graduates stay to serve New York state. Nationally, a bachelor's degree increases salary about \$21,000 annually, compared with a high school diploma, and a master's degree adds additional \$13,500 per year. For health and science careers, such as the education offered by SUNY Upstate, those increases can be even greater.



SUNY Upstate medical alumni locations across the United States.