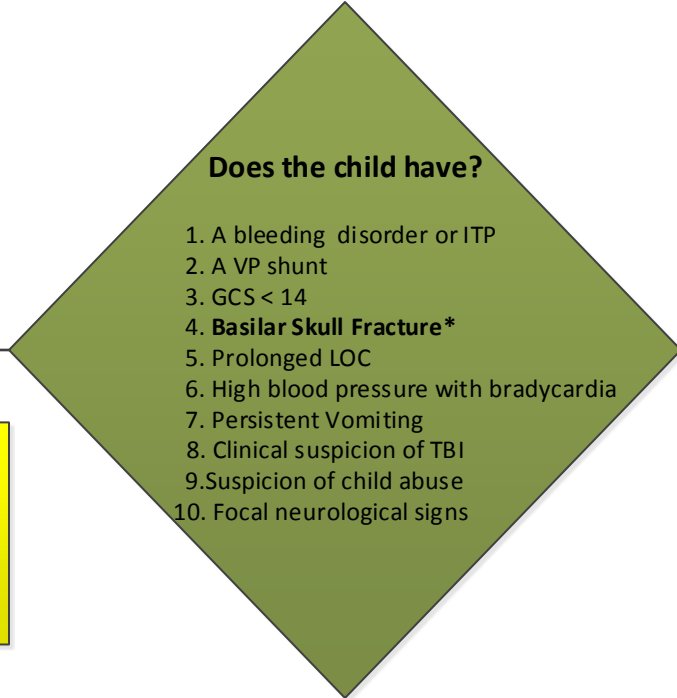
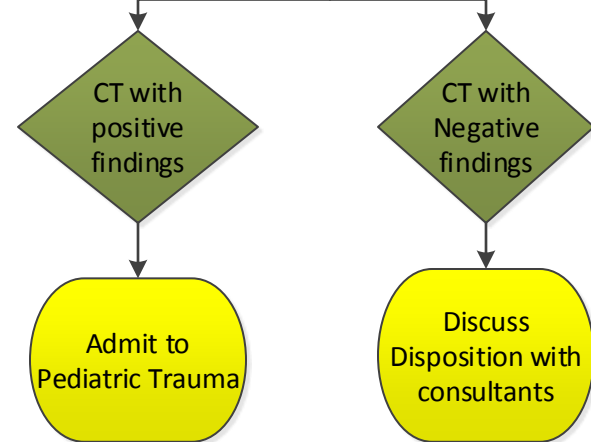


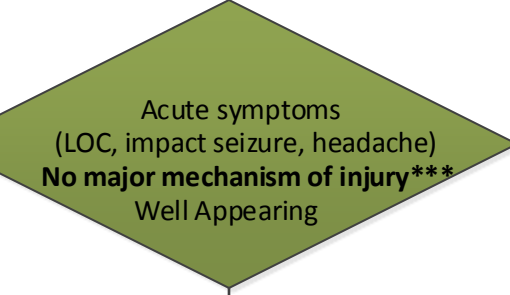
**Management Guidelines for Minor Head Trauma (TBI)
2-14 years old**



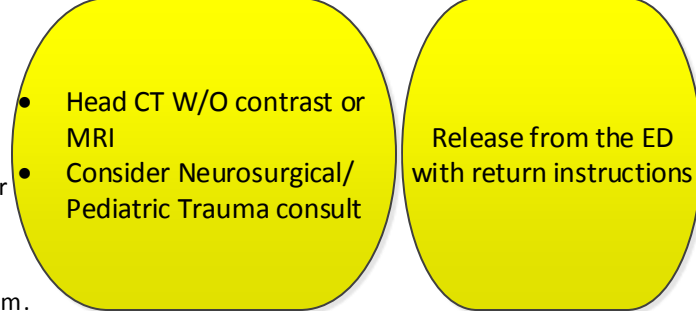
1. ATLS guidelines
2. Head CT W/O contrast or MRI
3. Consider Neurosurgical consult/ Pediatric Trauma consult
4. Rigid cervical collar as needed



Refer to the Moderate & Severe TBI protocol for patients to be admitted to the PICU



Observe in the ED



If suspicion of child abuse follow NAT order set and guidelines

- ***A major mechanism includes:**
1. Falling from a motorized vehicle
 2. MVC with occupant death/pt ejection/roll over
 3. Falling from a height of more than 6 feet
 4. Un-witnessed head injury with major mechanism.
 5. Car or pedestrian vs. bicycle

- * Signs of a Basilar skull Fracture include:**
1. Raccoon eyes
 2. Post ear hematoma
 3. Blood or CSF in ear