



The State University of New York Upstate Medical University

The International Student's Guide to Admission and Study

Tuition

The tuition for F-1 international students is based on the out-of-state tuition rate. International students are financially responsible for the payment of their tuition and living expenses, with the exception of PhD students in the College of Graduate Studies who are receiving a graduate assistantship and tuition waiver. For information on costs, which vary by program, visit www.upstate.edu/prospective

Visa

Obtaining a visa comes AFTER acceptance to SUNY Upstate.

Applying to our university is a separate process from that of obtaining a visa. The first step is to apply for admission to a program of study. After you have been accepted for admission, the International Student Advisor will assist you with your I-20 form application. An I-20 form is a certificate of eligibility document issued by the International Student Advisor from the SEVIS web-based system, sponsored by the U.S. Department of Justice, that shows that you are eligible and approved to apply for an F-1 student visa. Keep in mind that you must also submit the foreign student financial statement and supporting financial documentation that shows you are able to afford your tuition and living expenses in order to be issued an I-20, unless you will be receiving a graduate assistantship and tuition waiver. You will take the I-20 form with you when you apply for the F-1 visa at the nearest U.S. consulate in your home country.

Canadian students

Canadian students can attend school in the U.S. without a visa. If your primary language is English, it is not a requirement to take a Test of English as a Foreign Language exam (TOEFL) or submit TSE scores. Please note that SUNY Upstate does not recognize results from the 13th year as credit toward admission.

Canadian students may apply for loans from Provincial Canadian federal sources to attend SUNY Upstate.

Financial Aid

Doctoral students (PhD) in the College of Graduate Studies are eligible for graduate assistantships and tuition waivers. International students are not eligible for the U.S. government aid programs (Pell Grant, SEOG Grant, Stafford Loan, Perkins Loan, PLUS Loan, and Federal Work-Study). International students in all SUNY Upstate's colleges may apply for private loans through U.S. banks, providing a U.S. resident co-signs the loan. SUNY Upstate Medical University will not act as a co-signor of private loans. For more information on financial aid please visit www.edupass.org

Working in the U.S.

International students are permitted to work on-campus. Graduate students who receive an assistantship are provided a stipend for their services. Other students may work on a part-time basis.

For students without an assistantship the amount of time you may work is limited, so you should not rely on a part-time job to cover expenses or tuition. The typical on-campus non-assistantship job pays approximately \$1,000 to \$2,000 (U.S. dollars) during the school year, and a similar amount during the summer.

Insurance

All international students enrolled at SUNY Upstate are required to purchase health insurance and medical evacuation/repatriation either through SUNY Upstate or through private sources. If you do not purchase this plan, you may be required to prove that your health insurance is comparable.

Graduate students who receive assistantships are provided with benefits, including a low-cost health care package. For information about International Student Health Insurance and Medical/Security Evacuation and Repatriation Insurance visit www.haylor.com

Housing

Housing is available on campus. The Office of Residential Life provides information about on-campus living. For more information on campus housing, visit our website at www.upstate.edu/currentstudents/campuslife/residence/clark.php or call 315-464-5106.

Support

The International Student Advisor provides a wide range of support services for current and prospective F-1 students, such as advisement on the I-20/visa application process, maintaining F-1 status, F-1 employment options and benefits, status changes, SEVIS changes, obtaining a social security number, tax information, etc.

Admissions

Basic admission requirements, application procedures, SUNY Upstate on-line application forms, and links to the most up-to-date on our programs may be found at www.upstate.edu/prospective

Test of English as a Foreign Language (TOEFL)

All International students whose first language is not English must submit the Test of English as a Foreign Language (TOEFL) score report. Our institution code number is **2547**. Visit www.toefl.org for additional information.

TSE

Applicants to the College of Graduate Studies must submit evidence of ability to speak English and communicate effectively, for example, by taking the Test of Spoken English (TSE).

Course-by-Course Evaluation

Applicants to the Colleges of Health Professions and Nursing, who have completed all or part of their education abroad, are required to have a course-by-course educational credential evaluation completed by an approved agency prior to the application deadline. SUNY Upstate recommends using World Education Services at www.wes.org

SUNY Upstate Medical University

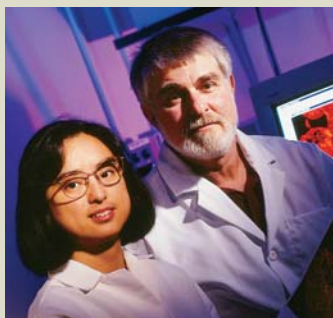
Office of Student Admissions

750 East Adams Street
Syracuse, New York 13210 USA

www.upstate.edu

Requirements for International Student Applicants at SUNY Upstate Medical University

(See page 3 for entry requirements.)



College of Graduate Studies

College of Graduate Studies
Application, \$40 fee

Must also submit:

- **Three Letters of Reference**
- **Official transcripts** from all undergraduate and graduate schools attended
- Official copy of Graduate Record Examination (**GRE**) **scores**. (The advanced subject test is helpful, but not required.) Our code number is **2547**.
- Official copy of the Test of English as a Foreign Language (**TOEFL**) **score**.

Evidence of ability to speak English:

- **TSE** (Test of Spoken English)
- English proficiency required during **telephone interview**



College of Medicine

Minimum of **90 semester hours** of undergraduate course work completed within the U.S. before applying.

Must submit:

- **AMCAS Application and fee**
www.aamc.org/students
- **SUNY Upstate Supplemental Application, \$100 fee**
- **MCAT scores**
- **Pre-Health Committee Letter of Recommendation or 2 Letters of Recommendation from faculty in 2 different disciplines**

Prerequisite lab courses:

General Biology 1 & 2
General Chemistry 1 & 2
Organic Chemistry 1 & 2
General Physics 1 & 2



College of Health Professions

Those educated abroad must have a **course-by-course evaluation** from an approved agency prior to application.

In addition:

Undergraduate Applicants:

- **SUNY Application, \$40 fee**
- **Upstate Supplemental Application**
- **2 Letters of Recommendation**
- **TOEFL** (if English is not your first language)
- **Observation Form** (if required)

Graduate Applicants:

Entry Level Doctorate of Physical Therapy Program:

- **Upstate Application with \$50 application fee**
- **2 Letters of Recommendation** (1 must be from a Physical Therapist)
- **TOEFL** (if English is not your first language)

Note: All students must complete specific requirements for each program. See the links at www.upstate.edu/chp



College of Nursing

Those educated abroad must have a **course-by-course evaluation** from an approved agency prior to application.

In addition:

Undergraduate Applicants:

- **SUNY Application, \$40 fee**
- **Upstate Supplemental Application**
- **2 Letters of Recommendation**
- **TOEFL** (if English is not your first language)
- **Observation Form** (if required)
- **New York State Registered Nurse License**

Graduate Applicants:

- **Application, \$40 fee**
- **3 Letters of Recommendation**
- **TOEFL** (if English is not your first language)
- **New York State Registered Nurse License**

Note: For further admissions requirements click the Academic Program link at www.upstate.edu/con

SUNY Upstate Medical University

Office of Student Admissions

750 East Adams Street
Syracuse, New York 13210 USA

www.upstate.edu



SUNY Upstate Medical University

Office of Student Admissions

750 East Adams Street
Syracuse, New York 13210
USA

www.upstate.edu

About the State University of New York Upstate Medical University

SUNY Upstate is located in Syracuse, New York. It is one of 125 academic medical centers in the United States. At SUNY Upstate, we conduct research, educate health professionals, and provide the most advanced healthcare in the region at our hospital and clinics.

Although most of our students are from New York State, SUNY Upstate enrolls international students each year.

SUNY Upstate is a transfer university and students enter having completed college coursework or degrees. See inside for further admissions requirements.

College of Medicine	MD, MPH	Most students enter with a Bachelor's degree or higher
College of Graduate Studies	PhD, MS	Students enter with a Bachelor's degree or higher
College of Health Professions	BS, BPS, MS, DPT	Students enter with a minimum of 60 college credit hours. Doctor of Physical Therapy students enter with a BS
College of Nursing	BS, MS	Students are already registered nurses and enter with a minimum of an associate's degree

Next Steps for Newly Accepted International students:

Visit the International Student Website at:
www.upstate.edu/currentstudents/international/

- Complete the I-20 application and submit it to the International Student Advisor along with copies of the following documents:
 - Passport
 - Visa
 - I-94 card
 - Current and prior I-20 forms
 - Social Security card (if you have one)
 - Complete the Foreign Student Financial statement and submit it to the International Student Advisor, along with supporting financial documentation, such as a bank statement which provides evidence of your income or finances. (If you are in a PhD program, and will be receiving a graduate assistantship, it is not necessary to complete this form.)
 - Be aware that you are required to have health insurance and medical/security evacuation and repatriation insurance as an international student by orientation. Information about International Student Insurance can be found at www.haylor.com/ or by contacting the International Student Advisor or the Bursar's Office.
- If you already have a student visa, and are currently studying in the United States, please complete the SEVIS Transfer form (found on the International Student Website), and also contact the International Student Advisor at your prior school to arrange for your SEVIS record to be transferred to SUNY Upstate. The SEVIS record will be electronically transferred by your prior school and will be available to SUNY Upstate effective on the date that it is released from the prior institution.
- Once the International Student Advisor has determined that you have sufficient finances to pay for your tuition and living expenses, you will be issued an I-20 form, which is a certificate of eligibility document, that you will carry with you at the U.S. consulate in your home country to show that you are eligible and approved to apply for an F-1 visa.
- You will be expected to attend the International Student orientation meeting in the fall to learn how to maintain your legal F-1 student status.



SUNY Upstate Medical University

Office of Student Admissions

750 East Adams Street
Syracuse, New York 13210
USA

www.upstate.edu

For up-to-the-minute information on our programs, links to our four colleges, and our application forms, visit:

www.upstate.edu/prospective

For information about life in Syracuse,
New York, visit [www.upstate.edu/about/
visitors_academic.php](http://www.upstate.edu/about/visitors_academic.php)

Other sites to help you prepare for study in the United States:

- Application for an I-20 Certificate of Eligibility for F-1 Student Status
[www.upstate.edu/currentstudents/
international/visa_info.php](http://www.upstate.edu/currentstudents/international/visa_info.php)
- AMCAS (to apply to the College of Medicine)
www.aamc.org
- Test of English as a Foreign Language (TOEFL)
web site www.toefl.org
- World Education Services is a not-for-profit
organization specializing in foreign credential
evaluation www.wes.org
- Edupass provides financial aid and visa
information www.edupass.org/immigration

If you have questions on our colleges, programs of study or admissions, please contact:

The Office of Student Admissions
SUNY Upstate Medical University
750 East Adams Street
Syracuse, NY 13210 USA
315-464-4570
admiss@upstate.edu

For the College of Graduate Studies please contact:

To obtain admissions information, visit
[admiss@upstate.edu/grad/admissions/
international.php](mailto:admiss@upstate.edu/grad/admissions/international.php)

To obtain international student
information, visit
[admiss@upstate.edu/grad/students/
international.php](mailto:admiss@upstate.edu/grad/students/international.php)

For other questions, please contact:
Sandra Tillotson
Graduate Recruitment Coordinator
315-464-7655
Toll Free: 866-951-5718
biosci@upstate.edu

If you have questions about your visa, or your F-1 student status, you may contact:

Jennifer Abbott
Assistant Registrar/International Student
Advisor
203 Campus Activities Building
SUNY Upstate Medical University
155 Elizabeth Blackwell Street
Syracuse, NY 13210 USA
315-464-4604
Fax: 315-464-8822
intlstud@upstate.edu