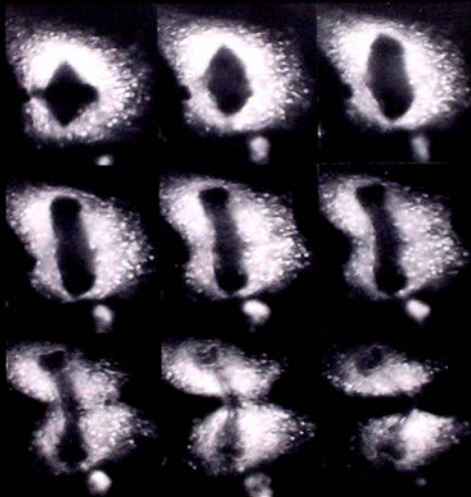


Volume 13
Number 4, 1989

CELL MOTILITY AND THE CYTOSKELETON



Alan R. Liss, Inc.

New York

ISSN 0886-1544

Cover micrograph: Fluorescence micrographs of a dividing PtK2 cell that has been vitally stained with the membrane dye, 3, 3' dihexyloxycarbocyanine iodide. Membranes are largely excluded from the mitotic spindle providing a negative image of the spindle as it elongates and narrows during anaphase and is bent by the assymetrically contracting cleavage furrow. Magnification equals 1,100x. Accompanying article by Sanger et al. on pages 301-319 in this issue.