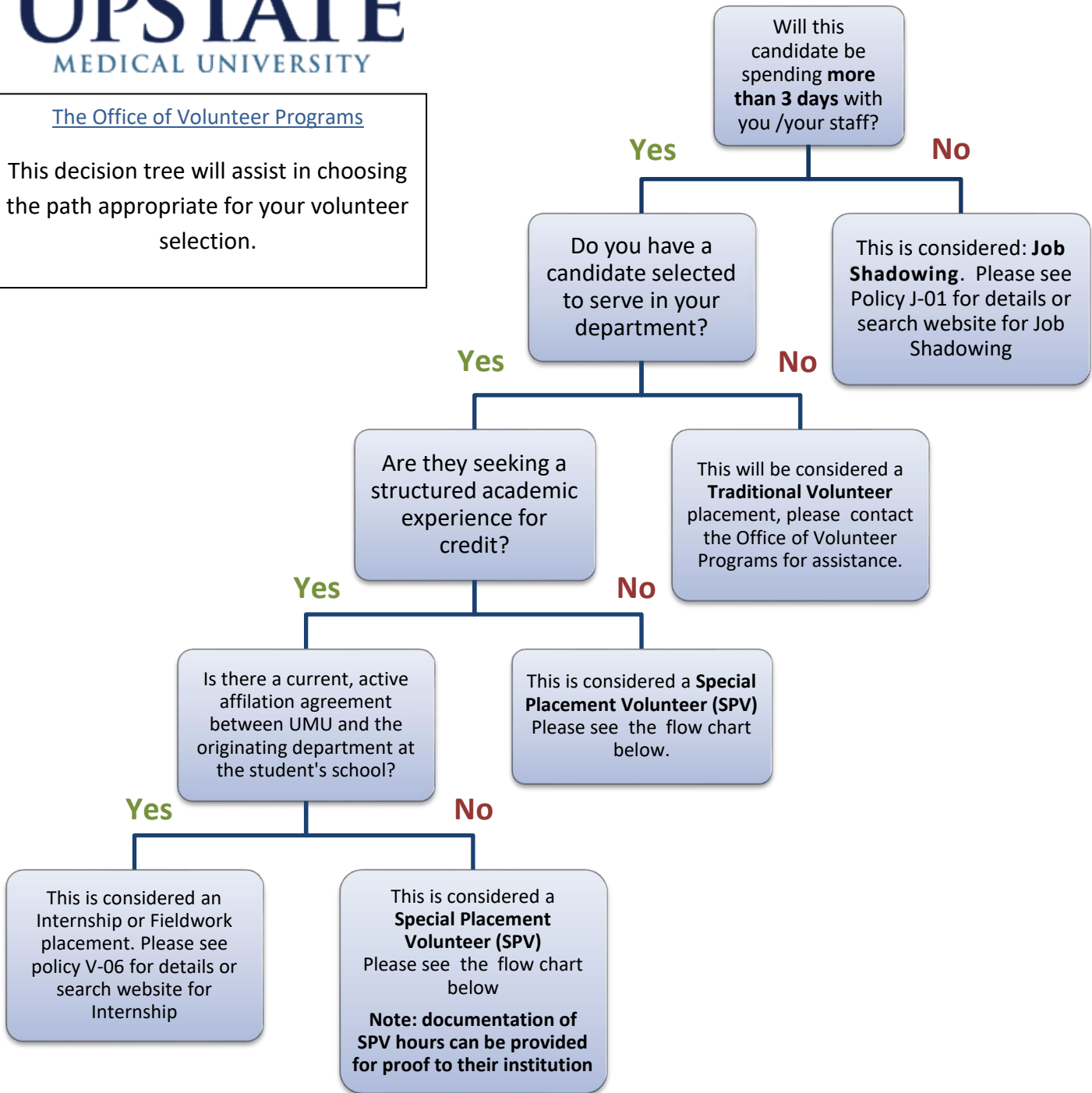


The Office of Volunteer Programs

This decision tree will assist in choosing the path appropriate for your volunteer selection.



**Special Placement Volunteers (SPV):** Individuals who provide direct service in support of UMU and its programs without compensation. These individuals are recruited and approved by the college or department in which they will be serving. Once approved, clearance and on-boarding is conducted by the Office of Volunteer Programs. Policy UW V-07

