

VIEWS FROM THE TOP

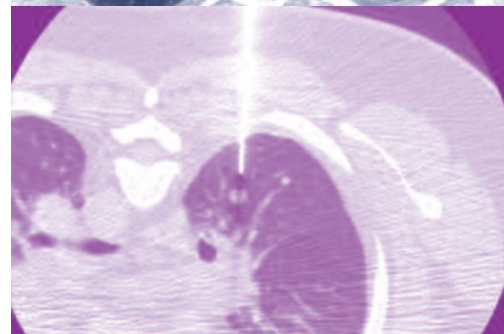
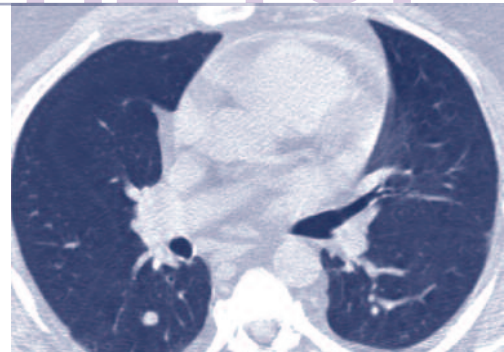
Interventional Radiology

Needle Biopsy of the Lung

Many patients have a tumor in the lung that is suspected to be a lung cancer or a metastasis from some other cancer. One way to determine whether such a tumor is dangerous or benign is to get tissue samples from it: in other words, a biopsy. One type of biopsy is the CT-guided needle biopsy. This procedure takes advantage of images made by a CT scanner to display the lung tumor, as a needle is directed through the chest and into the lung. Once the needle is in place, as many samples as necessary may be obtained. This biopsy can be accomplished quickly, safely and with minimal discomfort. It provides valuable information in nearly all cases.

Radiofrequency Ablation of Tumors in the Lung

Radiofrequency ablation (RFA) can help cancer patients who have a small lung tumor but who are not candidates for surgery or radiation therapy. RFA of the lung has been performed by interventional radiologists at University Hospital since 2000. This procedure depends on heating the tumor in order to kill its cells; the heat is delivered by a special needle called an electrode. As with CT-guided needle biopsy, images from a CT scanner are used to guide placement of the electrode. RFA can be performed in a single session as an outpatient procedure, usually without the need for general anesthesia. For appropriately selected patients it is an effective, minimally invasive cancer treatment.



Knowing changes everything.

For more information, contact MD Direct, 800-544-1605

www.upstate.edu/top

UPSTATE
CANCER CENTER

THORACIC ONCOLOGY PROGRAM

UPSTATE CANCER CENTER

750 East Adams Street | Syracuse, NY 13210

TOP

TEAM APPROACH to treating thoracic cancers— including lung cancer, esophageal cancer, mesothelioma, mediastinal tumors, thymoma, malignant pleural effusion and cancers metastatic to the chest.

ONE APPOINTMENT CONVENIENCE for patients to meet with specialists from: Thoracic Surgery, Medical Oncology, Radiation Oncology, Pulmonary Medicine and Thoracic Radiology.

PERIODIC PATIENT UPDATES for referring physicians treatment progress.

To learn more about TOP and meet our multidisciplinary team, visit our website at www.upstate.edu/top

The only service of its type in CNY.



Pictured from left:
Ernest M. Scalzetti MD, Professor of Radiology, Director, Chest Radiology,
E. Robert Heitzman Endowed Professorship in Radiologic Research
Rolf A. Grage MD, Associate Professor of Radiology



12.057 0712 1.4M ulc