

Adrenals

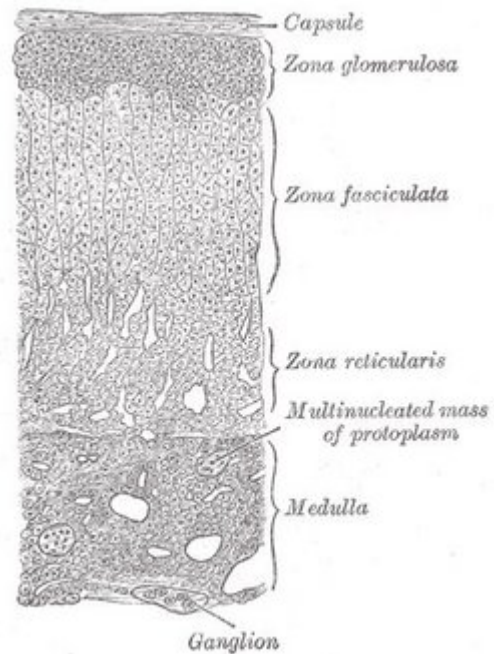
Salt→sugar→sex

Glomerulosa—mineralocorticoids (aldosterone)

Fasiculata—Glucocorticoids

Reticularis—Androgens (estrogen, androgens)

Medulla—chromaffin cells, secrete catecholamines (mainly epinephrine)



Hyperfunction:

- Cushing syndrome (excess cortisol)
- Hyperaldosteronism (Conn)
- Adrenogenital (virilizing syndromes)—CAH

Hypofunction:

- Hypoaldosteronism (Addison)