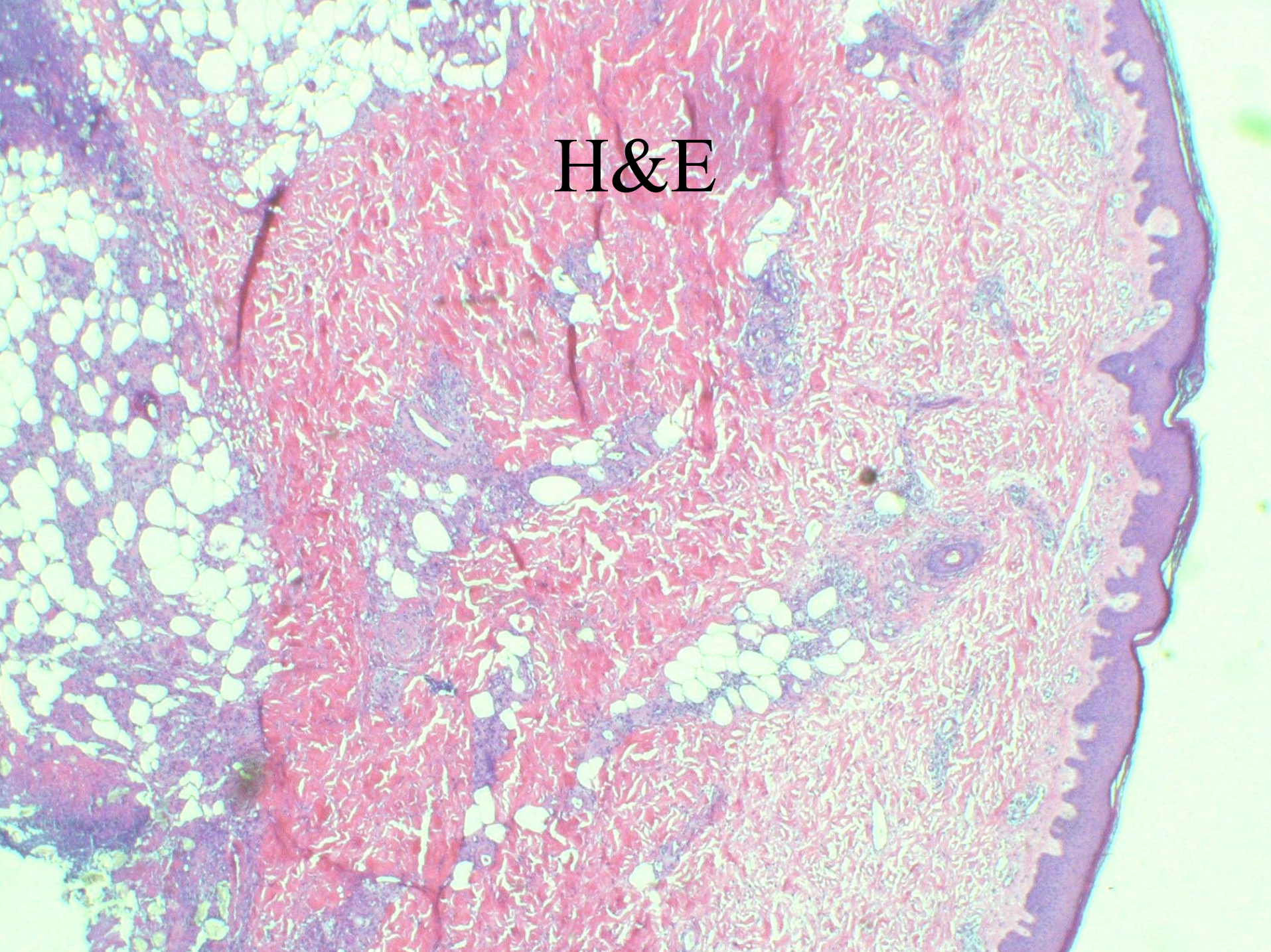
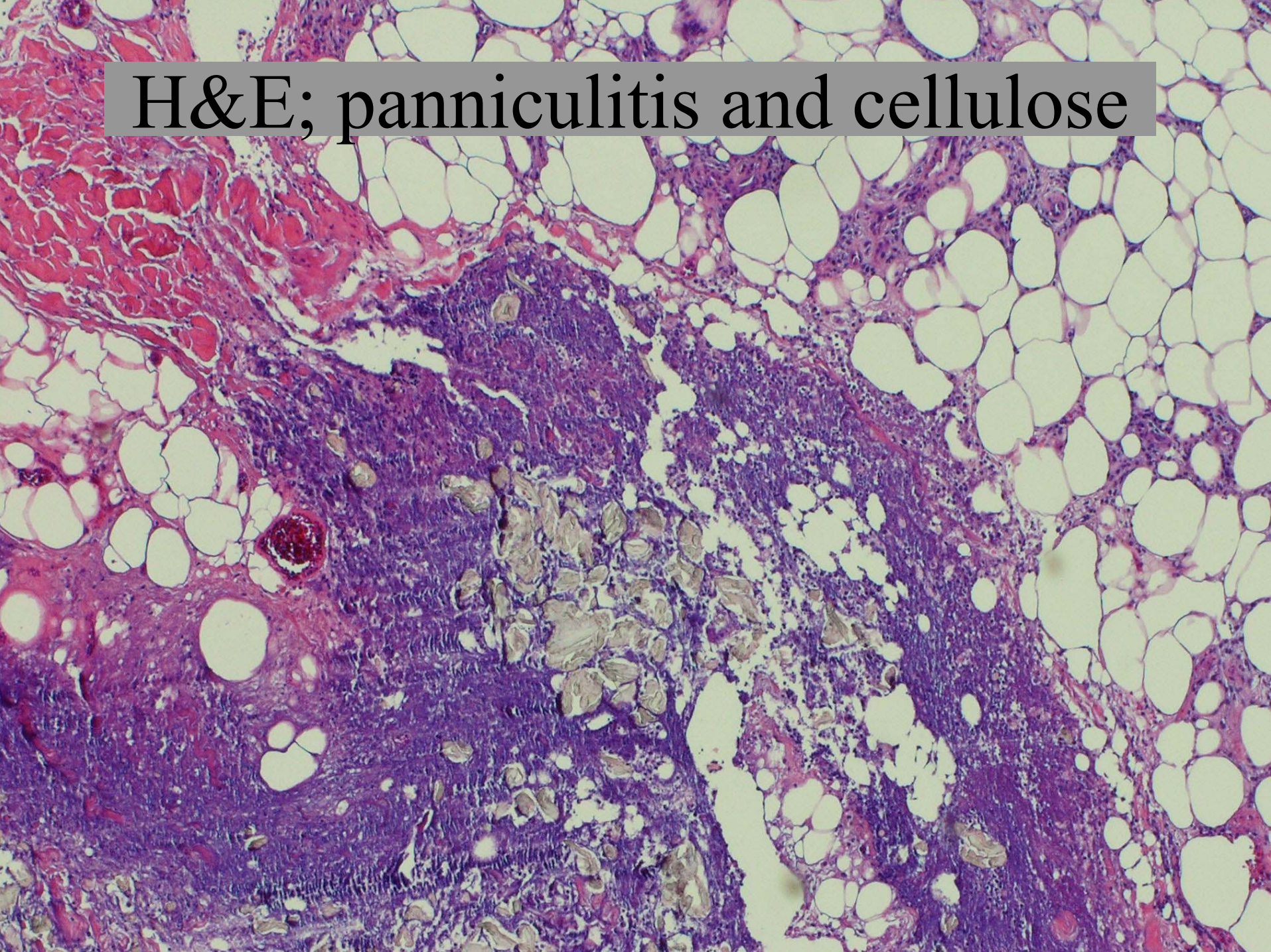


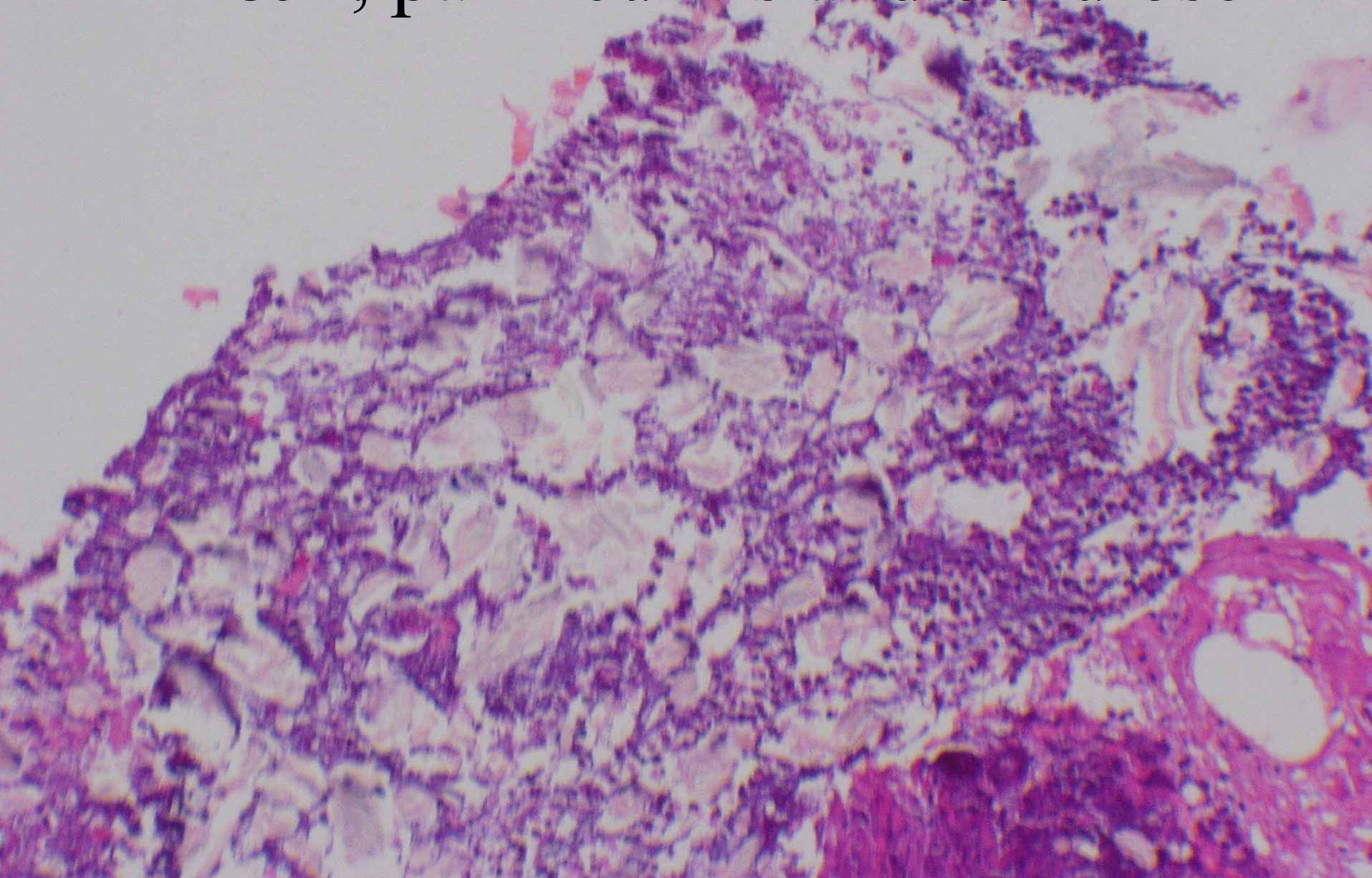
H&E



H&E; panniculitis and cellulose



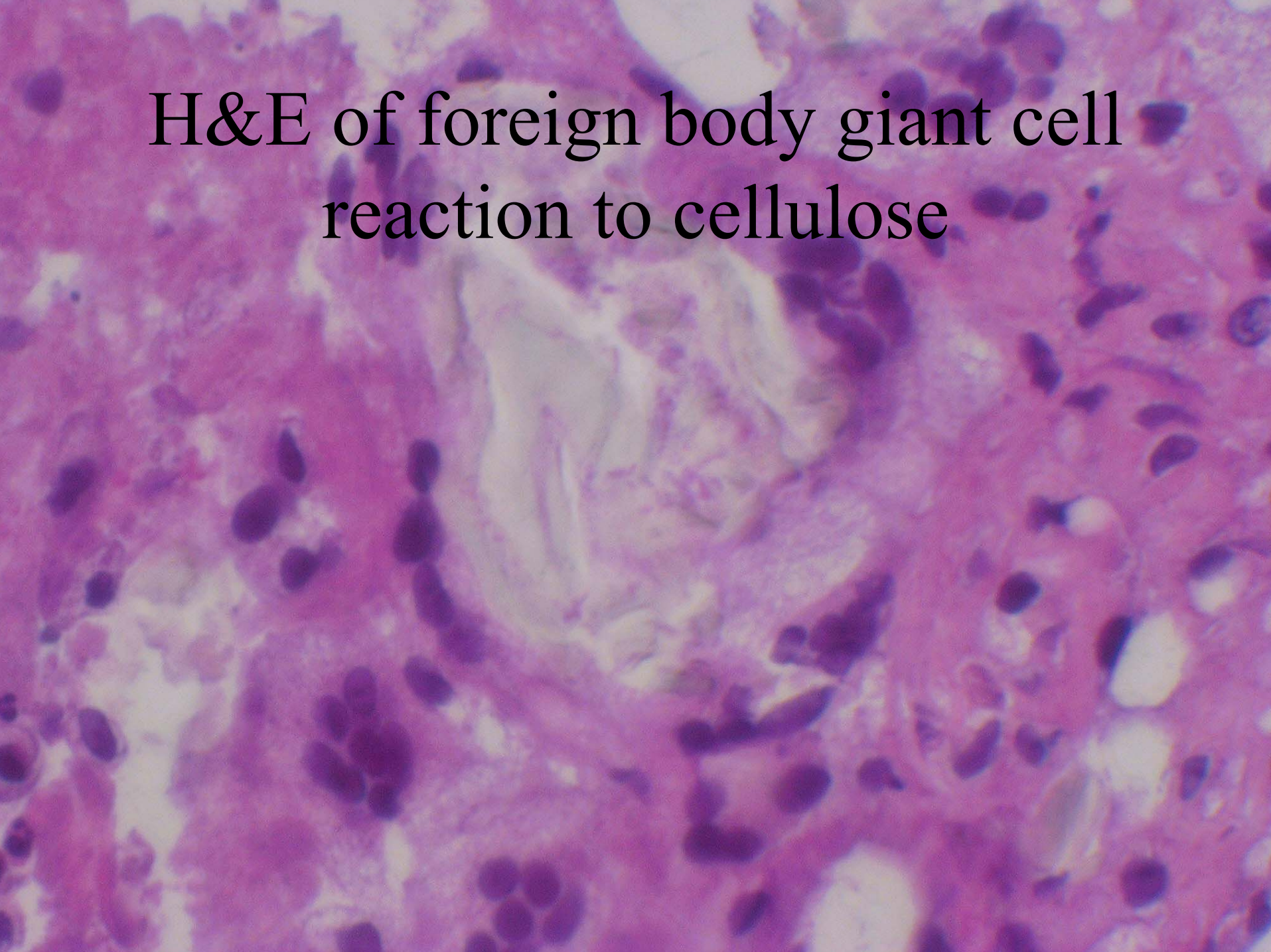
H&E, panniculitis and cellulose

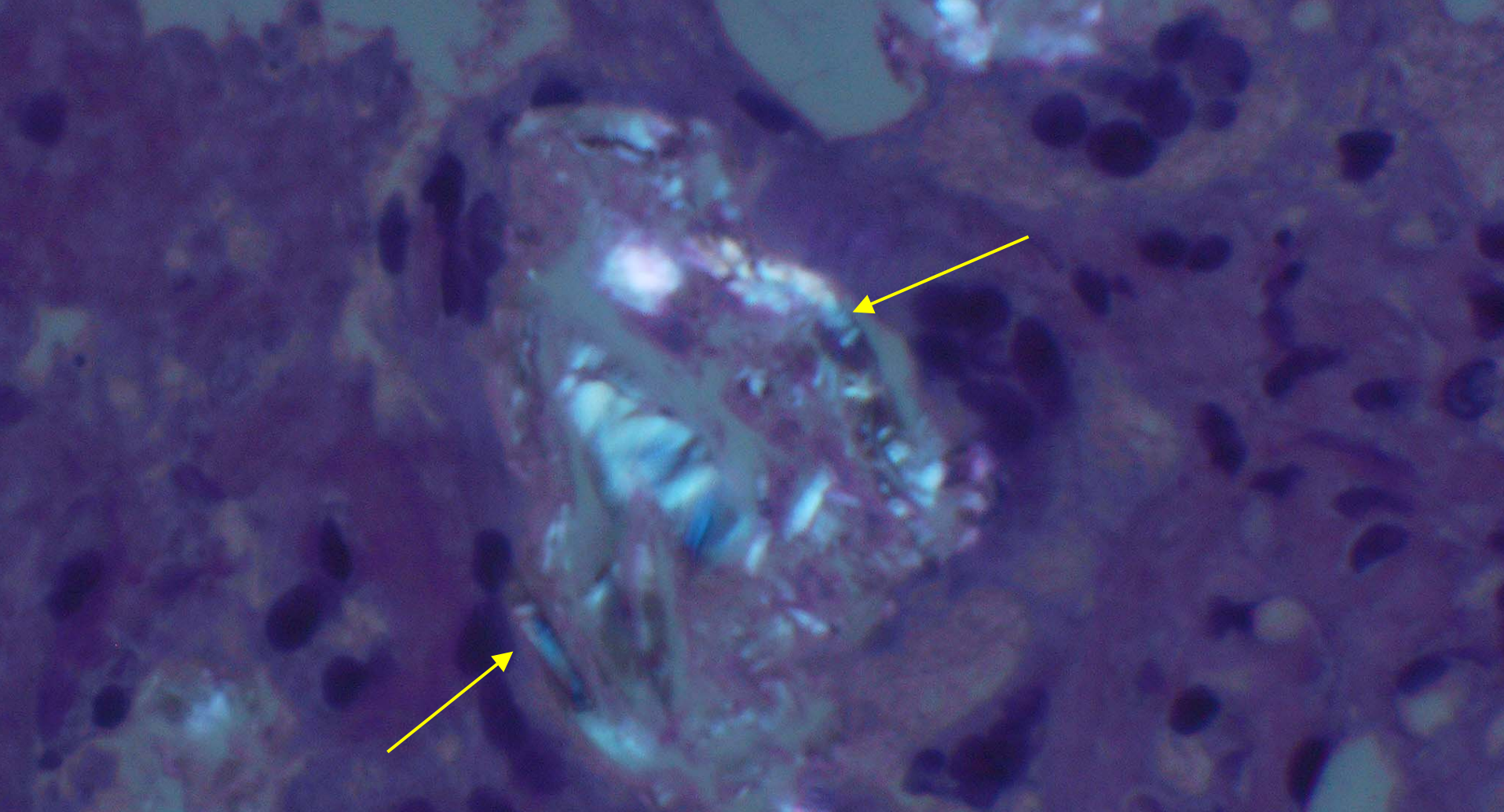


H&E Polarized LM; arrow shows  
transverse pattern

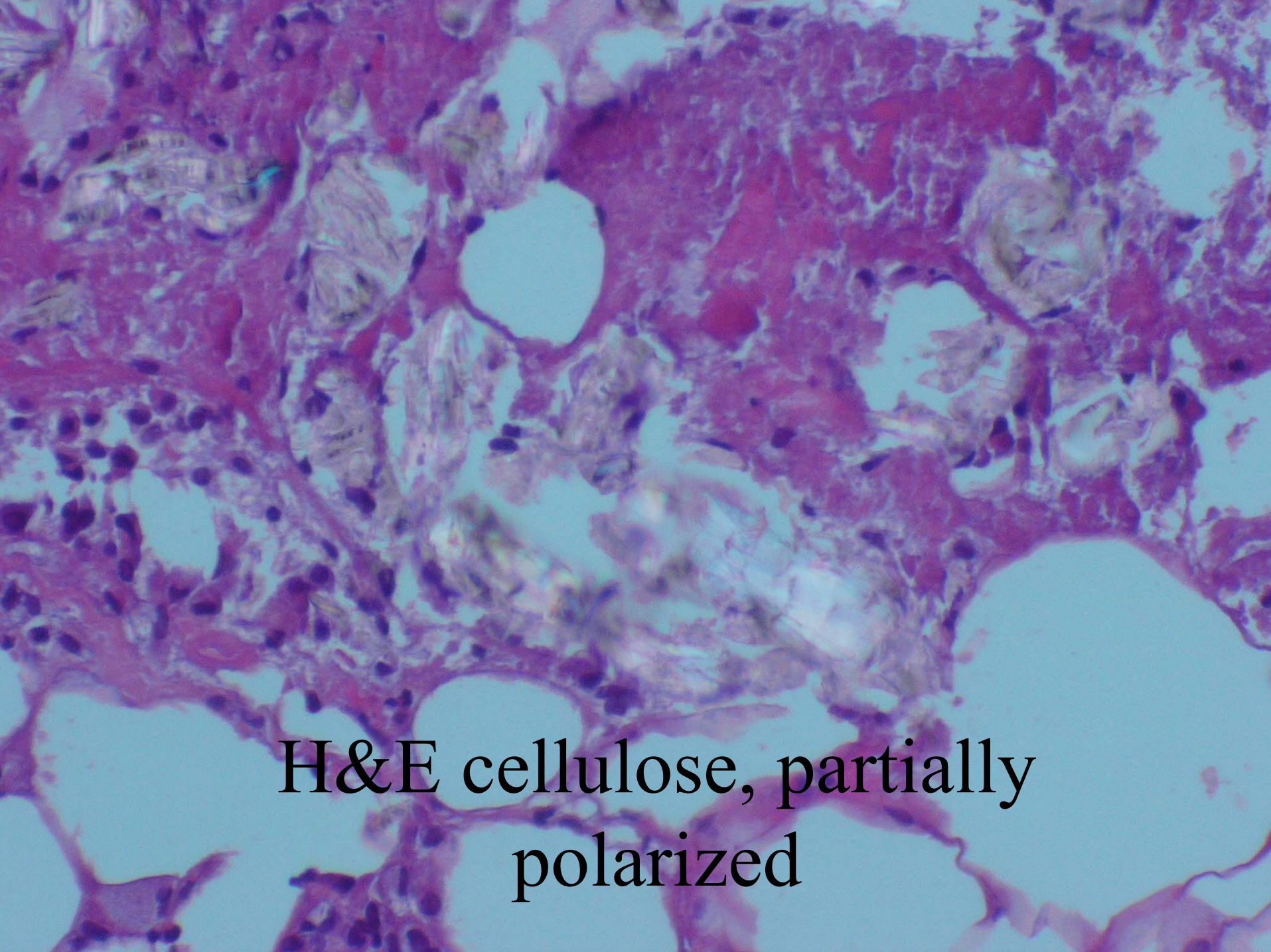


H&E of foreign body giant cell  
reaction to cellulose



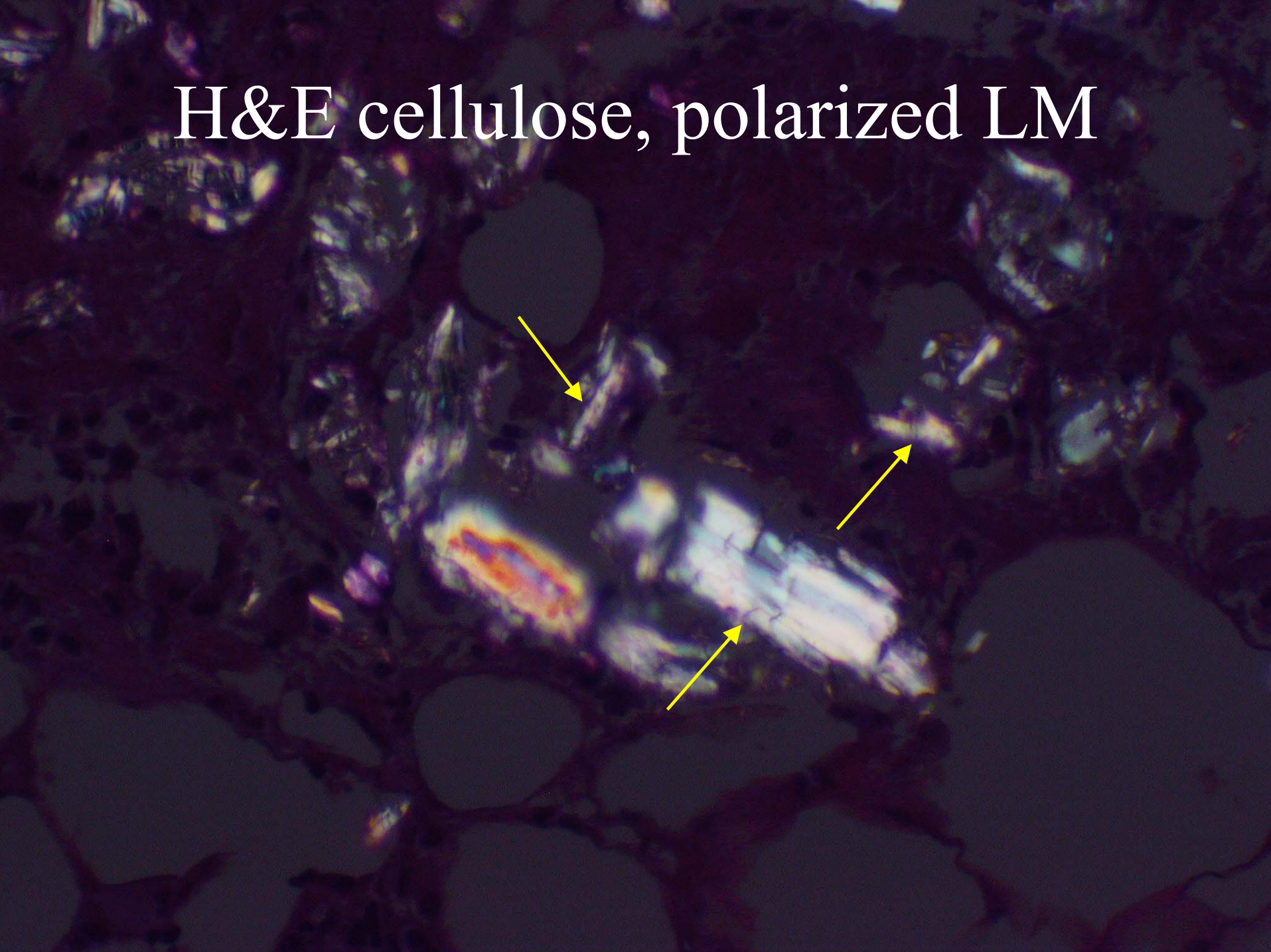


H&E Polarized LM of cellulose  
in giant cells, arrows show  
transverse pattern

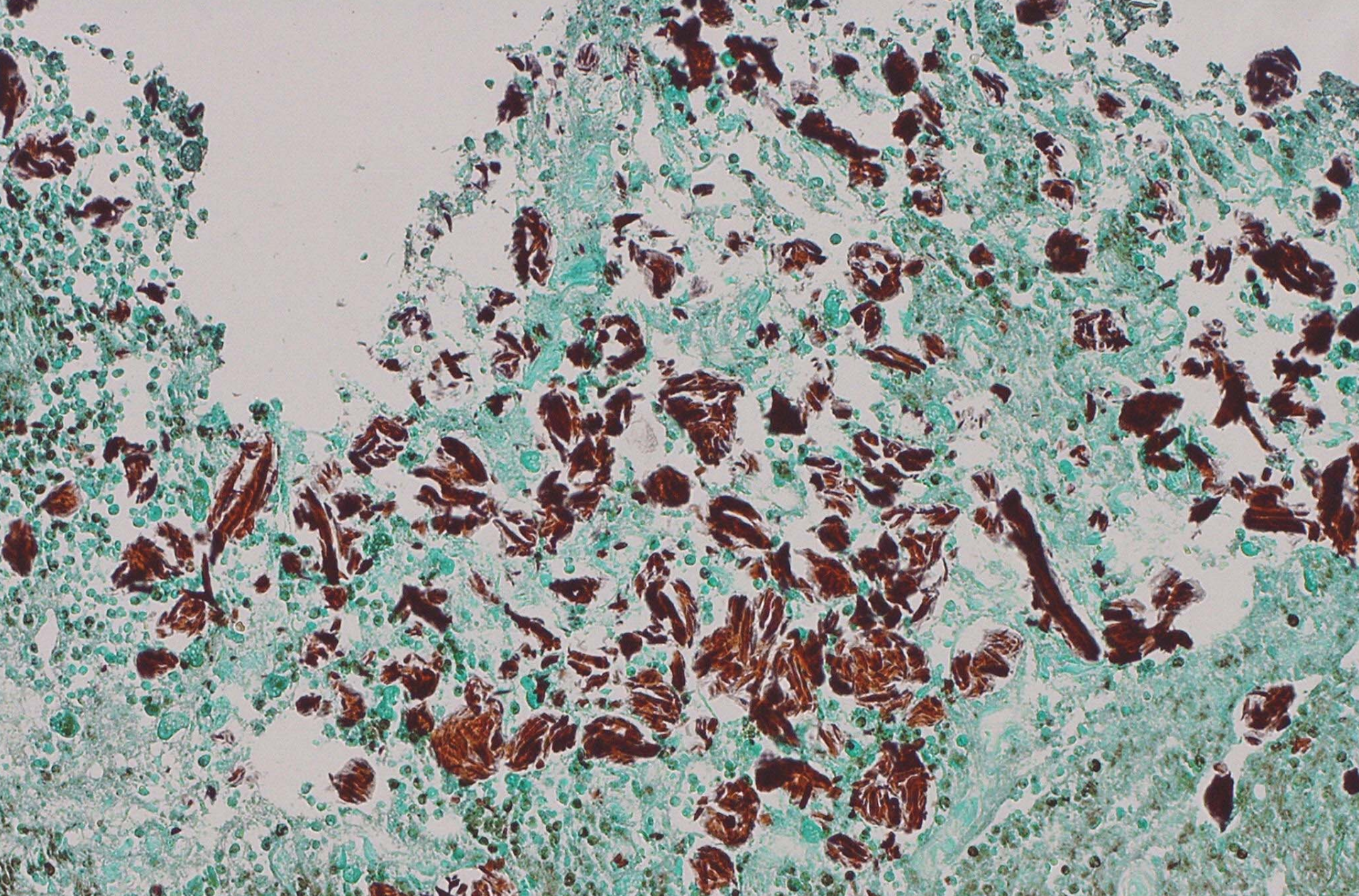


H&E cellulose, partially polarized

H&E cellulose, polarized LM

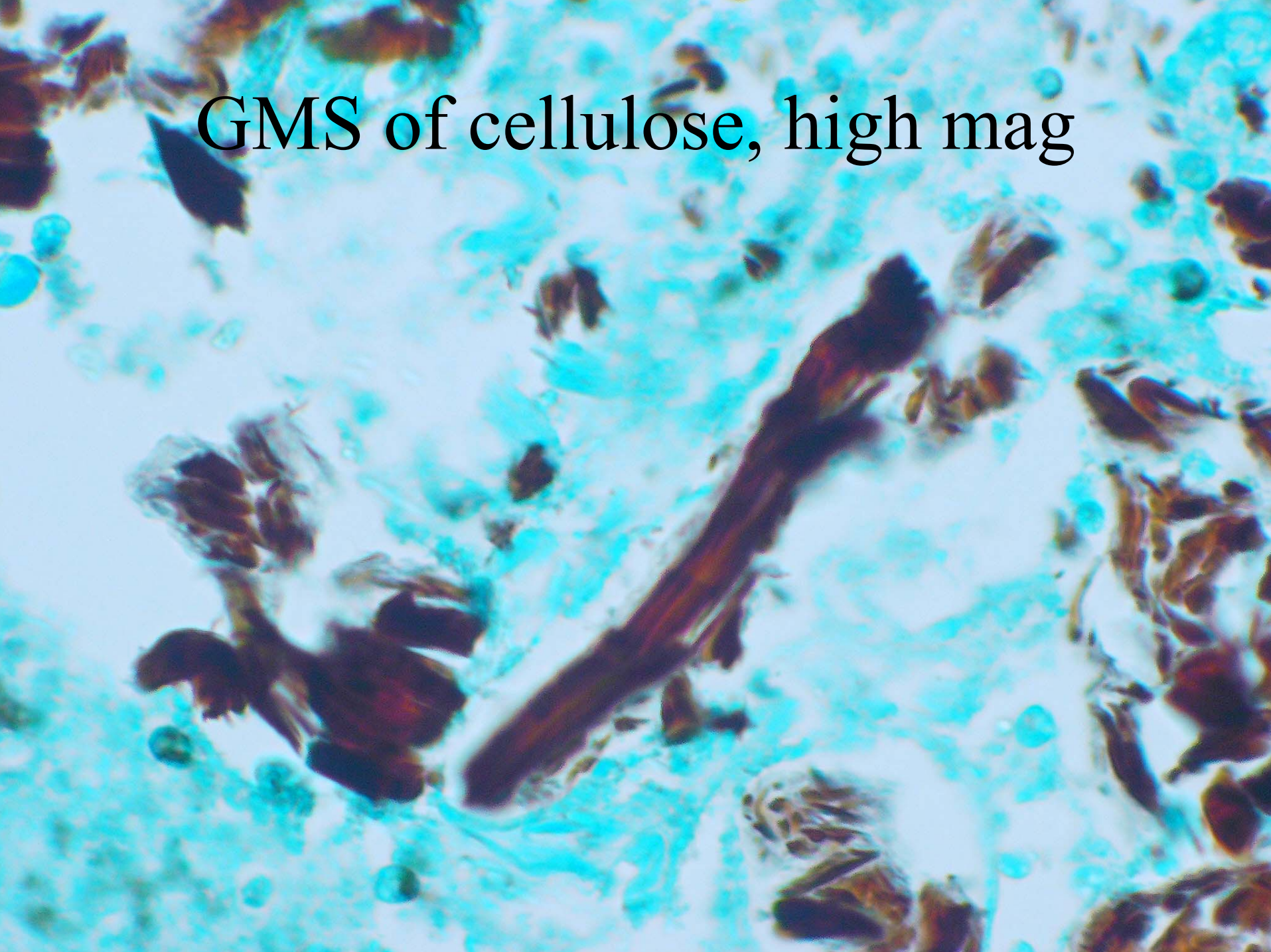






GMS of cellulose, medium mag

GMS of cellulose, high mag



# GMS Polarized Light Image

