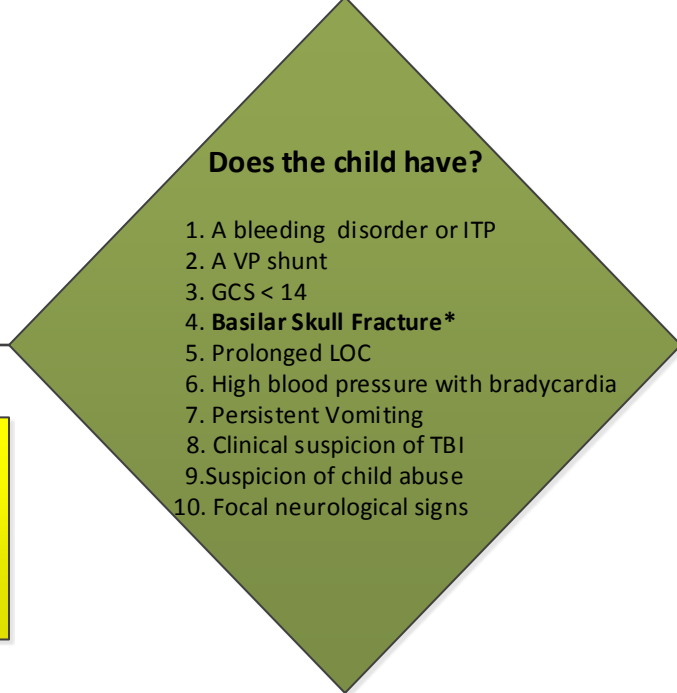
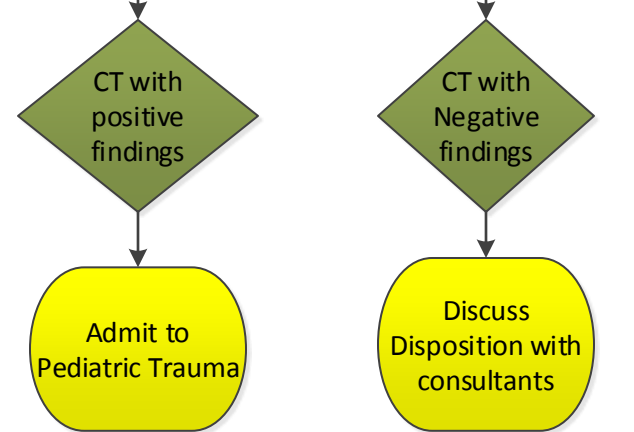


**Management Guidelines for Minor Head Trauma (TBI)  
2-14 years old**



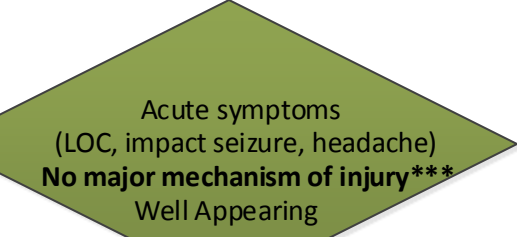
1. ATLS guidelines  
2. Head CT W/O contrast or MRI  
3. Consider Neurosurgical consult/ Pediatric Trauma consult  
4. Rigid cervical collar as needed



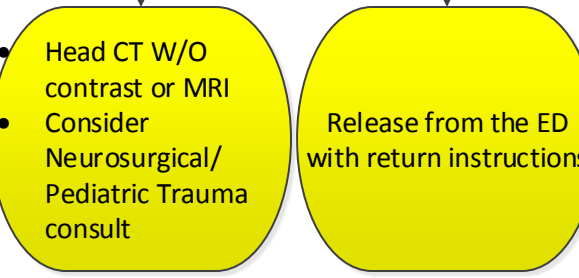
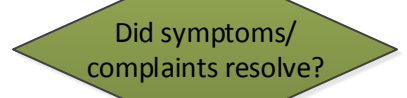
Refer to the Moderate & Severe TBI protocol for patients to be admitted to the PICU

- \*\*\*A major mechanism includes:**
1. Falling from a motorized vehicle
  2. MVC with occupant death/pt ejection/roll over
  3. Falling from a height of more than 6 feet
  4. Un-witnessed head injury with major mechanism.
  5. Car or pedestrian vs. bicycle

- \* Signs of a Basilar skull Fracture include:**
1. Raccoon eyes
  2. Post ear hematoma
  3. Blood or CSF in ear



Observe in the ED



If suspicion of child abuse follow NAT order set and guidelines

