



# SUNY Upstate Medical University Engaging Excellence

## RESEARCH

### Final Presentation

### June 5, 2007



State University of New York  
Upstate Medical University

# Presidential Select Task Team Engaging Excellence



*Charge:*

“Recommendations for improving research *i.e.*  
How can we get better?”



State University of New York

Upstate Medical University

# TEAM MEMBERSHIP



- – Barry Knox
- – Ruth Weinstock
- – Barbara Lacasse
- - Donna Welch
- - Jerrold Abraham
- - Marti Benedict
- - Sue Clark
- - Steve DeFazio
- - Mantosh Dewan
- - Tim Endy
- - Jennifer Moffat
- - Nancy Nussmeier
- - Dick O'Shea
- - Doretta Royer
- - Joe Sanger
- - Bruce Searles
- - Priscilla Worrall



# What about *Priorities*?



- Defend and promote *existing* strengths
- Fix *systemic* problems
- Plan for *rational* growth
- Establish *robust* steering mechanisms
- Prepare a detailed 10-year *vision*
- *Energize* UМУ, CNY and NYS  
to support and achieve



# Final Recommendations



- INSTITUTIONAL LEADERSHIP
- BASIC SCIENCE RESEARCH
- CLINICAL/TRANSLATIONAL RESEARCH
- INFRASTRUCTURE



State University of New York

Upstate Medical University

# INSTITUTIONAL LEADERSHIP



- 1. Research Steering Committee/V.P. for Research
- 2. Strategic Plan for Research in Clinical Departments
- 3. Philanthropic Support for Research
- 4. New Research Space
- 5. Reassignment of Research Lab Space
- 6. Establishment of Permanent Swing Space
- 7. Empire Scholars Search Committee



State University of New York

Upstate Medical University

# BASIC SCIENCE RESEARCH



- 8. Bridge Funding
- 9. Support for Graduate Students
- 10. Salary Plan for Basic Science Researchers
- 11. Postdoctoral Fellows Engaged in Research



# CLINICAL RESEARCH

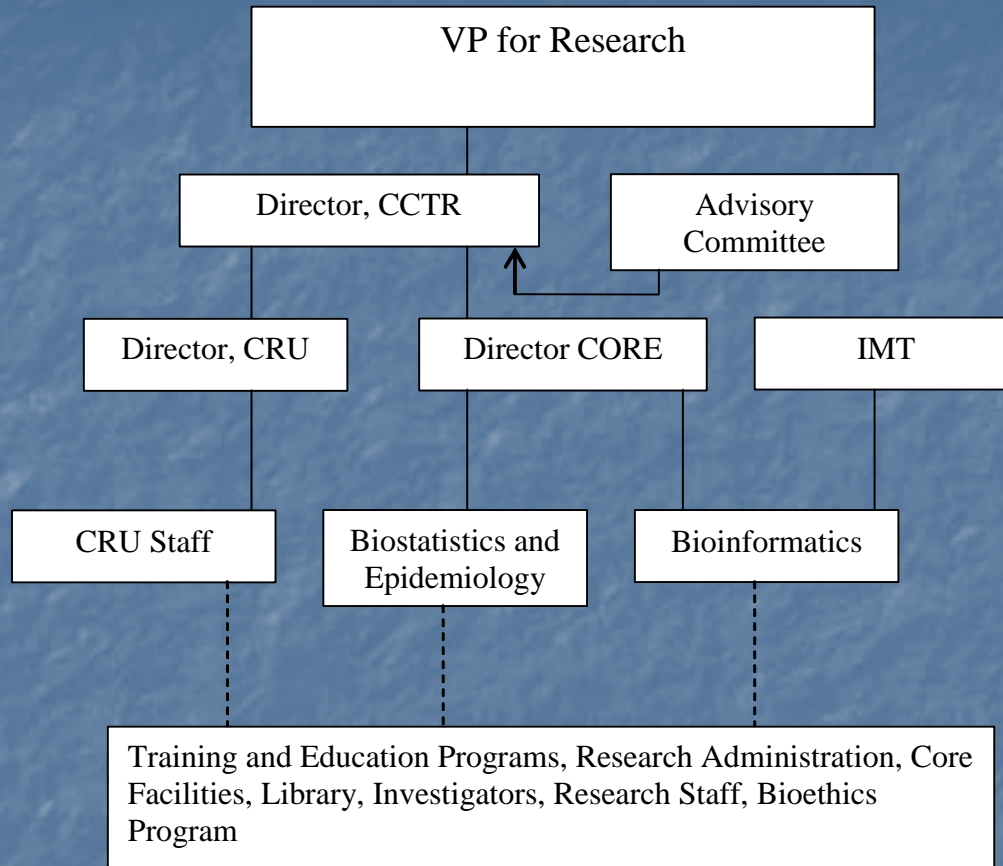


- 12. Center for Clinical and Translational Research
- 13. Salary Plan for Clinical Researchers
- 14. Increase Research Funding in Clinical Departments
- 15. Temporary Facility to Support In-patient Clinical Research
- 16. Clinical Research Information Technician Specialist
- 17. Incentive for Research for Faculty in Clinical Departments
- 18. Nursing Research Advisory Council
- 19. Nursing Research Mentoring Program
- 20. Nursing Research Pilot Funding
- 21. College of Health Professionals Research



State University of New York

Upstate Medical University



# INFRASTRUCTURE



- 22. Support for Sponsored Programs Office
- 23. General Support Analyst
- 24. Electronic Purchasing System for Research
- 25. Local Autonomy Over Research Foundation
- 26. Annual Faculty Research Retreat
- 27. Parking



State University of New York

Upstate Medical University



# QUESTIONS/COMMENTS



State University of New York  
Upstate Medical University