

4TH ANNUAL

# TRANSITIONS IN CARE SYMPOSIUM

IDENTIFYING AND ADDRESSING DRIVERS OF HIGH  
UTILIZATION FOR VULNERABLE POPULATIONS

## TUESDAY, JUNE 13

8 A.M. TO 5 P.M. ♦ ONCENTER ♦ SYRACUSE, NY

REGISTRATION ONLINE:

[WWW.UPSTATEFOUNDATION.ORG/UPSTATECON](http://WWW.UPSTATEFOUNDATION.ORG/UPSTATECON)



### WHO SHOULD ATTEND

Acute and community-based healthcare service providers, nurses, physicians, nurse practitioners, physician assistants, case managers, social workers, pharmacists, physical therapists, occupational therapists, dietitians, administrators and other individuals interested in improving person-centered quality healthcare services and supports for persons who transition from one healthcare setting to another.

### SYMPOSIUM PURPOSE

The Transitions in Care Symposium is a one-day event focusing on topics relevant to individuals involved in a patient's journey across the continuum of care. This year's Symposium is focusing on populations with patterns of high utilization.

The symposium brings together the interdisciplinary team; leaders of hospitals, community-based organizations, payors and others who are actively involved in innovations and strategies designed to identify and address drivers of high utilization for vulnerable populations.

This dynamic event will include national, regional and local innovators from across the care continuum who will share insights and expertise on whole person innovative practices designed to manage this vulnerable population.

### SYMPOSIUM OBJECTIVES

- Identify characteristics and drivers of utilization for vulnerable populations with high utilization patterns
- Identify best practices and evidence-based strategies designed to manage populations at risk for high utilization
- Gain an enhanced understanding and knowledge of community-based programs designed to meet the needs of this population
- Describe opportunities and enhanced understanding of data collection and analysis for the purpose of identifying and managing at-risk populations

### Accreditation

7.5 CE will be provided for the educational event for nursing, social work, and healthcare executives

- Institute for Continuing Nursing Education at SUNY Upstate Medical University is an approved provider of continuing nursing education by the New Jersey State Nurses Association, an accredited approver by the American Nurses Credentialing Center's Commission On Accreditation.

Provider Number NYP261-11/14-17

- SUNY Upstate Medical University is recognized by the New York State Education Department's (NYSED) State Board for Social Work as an approved provider of continuing education for licensed social workers #0291

- As an independent chartered Chapter of the American College of Healthcare Executives, the Healthcare Management Association of Central New York is authorized to award 7.5 hours each of ACHE Qualified Education credit towards advancement or recertification in the American College of Healthcare Executives

**Disclosures** All planners and speakers for this activity have disclosed they have no financial relationships with commercial interests

*Presented by:*

*Upstate University Hospital, Transition Care Services and  
SUNY Upstate Medical University, College of Nursing*

*Sponsored by:*



Healthcare Management Association -  
Central New York, a chapter of the American  
College of Healthcare Executives

# TRANSITIONS IN CARE SYMPOSIUM

IDENTIFYING AND ADDRESSING DRIVERS OF HIGH UTILIZATION FOR VULNERABLE POPULATIONS

**Tuesday June 13**

**8 am - 5 pm**

followed by a reception

OnCenter, 800 South State Street., Syracuse NY  
Parking free in the Oncenter parking garage

Registration at:

[www.upstatefoundation.org/UpstateCON](http://www.upstatefoundation.org/UpstateCON)

## SYMPOSIUM SCHEDULE

**8 - 10 am**

### Welcome

Nancy Page, CNO Upstate University Hospital

### Keynote Speaker: Identifying and Addressing Drivers of High Utilization for Vulnerable Populations

Amy Boutwell MD, MPP, President, Collaborative Healthcare Strategies

**10 - 10:15 am BREAK**

**10:15 - 11 am Panel - Strategies**

- Pediatric Health Home - Elizabeth Nolan, LMSW - Health Homes Serving Children
- Liberty Resources- Marta Durkin, LMSW - How Peers are Improving Health Outcomes
- St. Camillus Day Program - Jennifer Page, CTRS
- Syracuse Behavioral Health - Raymond Wright, Director of Residential Services

**11 - Noon**

### Applications of Population Health - Management Technologies in the Management of High-Utilizing & Vulnerable Populations

Joseph Riley, MPH, Chief Information Officer, Central New York Care Collaboration

**Noon - 1 pm**

### LUNCH and Networking

**1 - 2 pm**

### The Upstate Emergency Medicine Bridge Clinic: An Emergency Department's Response to the Opioid Epidemic

Ross Sullivan M.D, Assistant Professor, Upstate Department of Emergency Medicine/Director of Medical Toxicology Consultation Service

**2 - 2:45 pm**

### Panel- Resources

- Onondaga Country Resource Center - JoAnne Spoto Decker - Long Term Care Services and Supports
- Hopeprint Collaborative Project - Nicole Watts
- HealthConnections - Jeff Sneider, MD, Family Care Medical Group
- Upstate - Susan Freeman - Video Remote Interpreting

**2:45 - 3 pm**

### BREAK

**3 - 4 pm**

### Elder Law & Special Needs, Tax & Trusts & Estate Practices

Jaime J. Hunsicker Esq., Associate Hancock & Estabrook

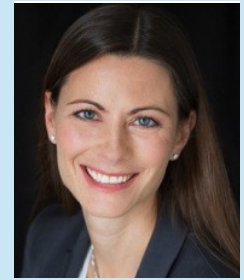
**4 - 5 pm**

### Community Violence a Public Health Crisis

Lawrence Williams, Director - Syracuse Save Our Youth

**5 - 6 pm**

### Wine and Cheese Reception



### Keynote speaker: Amy Boutwell MD, MPP

Dr. Boutwell is President of Collaborative Healthcare Strategies, a thought leadership and technical assistance firm that advises delivery system transformation efforts nationally. Dr. Boutwell advises several large-scale collaborative efforts aimed at system redesign to reduce readmissions and improve care across settings and over time. These include several federal initiatives funded by the Centers for Medicare & Medicaid Services (CMS), such as the Quality Improvement Organization "Care Transitions" Aim, the Partnership for Patients Hospital Engagement Networks, and the CMS Learning Systems for Accountable Care Organizations and Bundled Payments. Dr. Boutwell has also worked with the Massachusetts Health Policy Commission, in addition to statewide all-payer readmission reduction efforts in Massachusetts, Michigan, Washington, Maryland, and Virginia; and the New York Medicaid Delivery System Reform Incentive Program "super utilizer" collaborative. Dr. Boutwell also advises providers, provider associations, state agencies, and health information technology and health information exchange agencies.

## REGISTRATION FEE

**\$125 per person**

Includes conference materials, light continental breakfast and lunch.

## FOR MORE INFORMATION

Jodie Brown RN, MSN/MBA, Director,  
Continuing Nursing Education  
[brownjod@upstate.edu](mailto:brownjod@upstate.edu)

REGISTRATION ONLINE: [WWW.UPSTATEFOUNDATION.ORG/UPSTATECON](http://WWW.UPSTATEFOUNDATION.ORG/UPSTATECON)

**UPSTATE**  
MEDICAL UNIVERSITY